

ANNUAL REPORT • 年報

2017-2018

With Christian Love

We Care

With Excellence We Serve

基督精神 醫護全人



基督教聯合醫務協會
UNITED CHRISTIAN MEDICAL SERVICE



基督教聯合醫院
UNITED CHRISTIAN HOSPITAL



醫院管理局
HOSPITAL
AUTHORITY

- 與非政府組織合作，試行醫社協作計劃，為出院的年長病人提供需要評估、出院規劃，以及出院後的康復服務
- 增加社區老人評估小組外展服務名額，以加強支援居住於老人院舍的末期病人
- 於內科、外科及骨科病房以氯己定為有機會感染多重耐藥性細菌的病人洗澡
- 增加 18 張急症病床以擴充服務能力
- Pilot a medical-social collaborative program with NGOs by providing needs assessment, discharge planning and post-discharge rehabilitation service for discharged elderly patients in the community
- Strengthen support for terminally ill patients living in Residential Care Homes for the Elderly by providing additional CGAT outreach attendances
- Provide chlorhexidine bathing for patients at risk of hospital-acquired multi-drug resistant organism infections in the medical, surgical and orthopaedic wards
- Add 18 acute beds to expand service capacity

基督教聯合醫務協會

基督教聯合那打素社康服務

基督教聯合那打素社康服務（「社康」）為基層醫療服務先驅，成立以來一直堅守「無牆醫院」的理念，致力為大眾提供專業、全面且收費相宜的醫療服務，實踐「全人健康」。社康於年內推出多項嶄新服務，讓不同人士獲得預防性護理和優質的疾病治理。

- 承蒙余兆麒醫療基金贊助，賽馬會天水圍社區健康中心舉辦「讓孩子活出亮麗人生」計劃，由精神科醫生為區內疑患有專注力失調或過度活躍症（簡稱 ADHD）的孩子提供專業評估、處方藥物及跟進治療，並輔以臨床心理學家或註冊護士工作坊、營養諮詢服務等，協助孩子面對各種障礙及改善症狀。
- 社康承蒙香港賽馬會慈善信託基金的支持，推出「賽馬會樂活長者『健』社區」計劃，為長者提供跨專業護理，服務範圍包括：家居安全評估、基本健康評估、營養評估、生活狀況評估、長者衰老評估及其他轉介治療。
- 社康與關愛基金合作，推廣「子宮頸癌篩查及預防教育先導計劃」，為合資格低收入的婦女提供免費或資助的子宮頸癌篩查及健康教育，減低她們患上子宮頸癌的風險。
- 社區營養服務獲得食物及衛生局「降低食物中鹽和糖委員會」及九龍城區議會的贊助，與九龍城區議會合辦「#少鹽少糖由我話事」計劃，將健康訊息帶到區內各小學、幼稚園及食肆。

位於基督教聯合醫院 J 座之醫療中心裝修工程進行得如火如荼，多項服務包括中醫專科門診、臨床心理及心理輔導服務、社區復康及病理化驗服務將於 2018 年中陸續投入服務。

United Christian Medical Service

United Christian Nethersole Community Health Service

As a pioneer of primary health care service provider, United Christian Nethersole Community Health Service (UCNCHS) adheres to the principle of "Hospital without Walls" by providing professional, comprehensive and affordable medical services to the public in order to achieve "Holistic health for all". Within the year, UCNCHS introduced brand new services to enable people with different needs to receive preventive care and quality disease management.

- Sponsored by S.K. Yee Medical Foundation, the Jockey Club Tin Shui Wai Community Health Centre organized the "Bright Future" program to offer children with attention deficit hyperactivity disorder (ADHD) early diagnostic screening, medical treatment, medications by psychiatrist, supplemented with workshops by clinical psychologist and registered nurse, nutrition counselling services, parent education and support, hopefully assisting children to face various obstacles and improve symptoms.
- With the support from The Hong Kong Jockey Club Charities Trust, UCNCHS launched "Jockey Club District Primary Care Program for the Elderly" to provide elderly with interdisciplinary care including assessments of home safety, basic health, nutrition and lifestyle, frailty as well as follow-up referrals.
- UCNCHS collaborated with the Community Care Fund to roll out the "Pilot Scheme on Subsidized Cervical Cancer Screening and Preventive Education" for low income women to reduce their risk of developing cervical cancer.
- With the support from the Food and Health Bureau's "Committee on Reduction of Salt and Sugar in Food", the Community Nutrition Service unit co-organized with the Kowloon City District Council to launch "#少鹽少糖由我話事" program to visit and educate students at primary schools and kindergartens and promote the idea to eateries in the district.

Renovation work of the medical centre at Block J of the United Christian Hospital was in the pipeline and various services including Chinese medicine specialty services, clinical psychological and counselling services, community rehabilitation and pathology services would come into operation after mid-2018.

二零一七年度基督教聯合醫務協會委員會成員

United Christian Medical Service Committee Membership 2017

院牧事工委員會 Chaplaincy Committee

主席	Chairman
徐贊生主教	Rt Rev TSUI Tsan Sang, Louis
委員	Members
歐陽兆基牧師	Rev AU YEUNG Siu Kei, Tony
方承方牧師	Rev FONG Sing Fong, Abraham
郭志丕主教	Rt Rev Dr Kwok Chi Pei, Timothy
岑禹勤牧師	Rev SHAM Yu Kan
蘇以葆主教	Rt Rev Dr SOO Yee Po, Thomas, JP
王家輝牧師	Rev WONG Ka Fai
翁傳鏗牧師	Rev YUNG Chuen Hung
陳月桂女士	Ms CHAN Yuet Kwai
秘書	Secretary
基督教聯合醫務協會主任院牧	UCMS Chaplain I/C
列席委員	Observers
雅麗氏何妙齡那打素醫院主任院牧	Alice Ho Miu Ling Nethersole Hospital Chaplain I/C
東區尤德夫人那打素醫院主任院牧	Pamela Youde Nethersole Eastern Hospital Chaplain I/C
特邀委員	Co-Opted Members
基督教聯合醫院高級行政經理 (社區協作)	Senior Administrative Manager (Community Partnership), UCH
基督教聯合醫院護士團契代表	Nursing Christian Fellowship Representative, UCH
基督教聯合醫院員工團契代表	Staff Christian Fellowship Representative, UCH
基督教聯合醫院臨床心理學家	Clinical Psychologist (Dept of Psychiatry), UCH
當然董事	Ex-Officio Directors
基督教聯合醫務協會醫務董事	Medical Director, UCMS
基督教聯合醫務協會護理董事	Nursing Director, UCMS
基督教聯合醫務協會行政董事	Administrative Director, UCMS

籌款委員會 Fund-Raising Committee

主席	Chairman
黃婉玲女士	Ms WONG Yuen Ling, Grace
委員	Members
李國謙先生	Mr LI Kwok Heem, John, MH
李澤昆先生	Mr LI Chan Kwan, Marthy
李民滔先生	Mr LI Man Toa, Michael
徐德義醫生 (至 2017 年 8 月 6 日)	Dr CHUI Tak Yi (up to 6.8.2017)
譚錦添醫生 (由 2017 年 8 月 7 日)	Dr TOM Kam Tim (since 7.8.2017)
湛偉民先生	Mr CHAM Wai Man, Terence
岑素圓女士	Ms SHAM So Yuen, Alice
李志源先生	Mr LEE Chi Yuen, Lawrence
其他委員由主席提議	Other Members to be proposed by the Chairman
秘書	Secretary
張玉清女士	Ms CHEUNG Yuk Ching, Bonnie

投資工作小組 Investment Working Group

召集人	Convenor
陳文寬先生	Mr CHAN Man Foon, Derek
委員	Members
李國謙先生	Mr LI Kwok Heem, John, MH
黃達琪先生	Mr WONG Tat Kee, David
李民滔先生	Mr LI Man Toa, Michael
馮壽松先生 #	Mr FUNG Sau Chung #
周近智先生	Mr CHOW Kun Chee, Roland
湛偉民先生	Mr CHAM Wai Man, Terence
秘書	Secretary
李志源先生	Mr LEE Chi Yuen, Lawrence

於 2018 年 9 月 11 日去世 Passed away on 11.9.2018

基督教聯合那打素社康服務管理委員會

United Christian Nethersole Community Health Service Management Committee

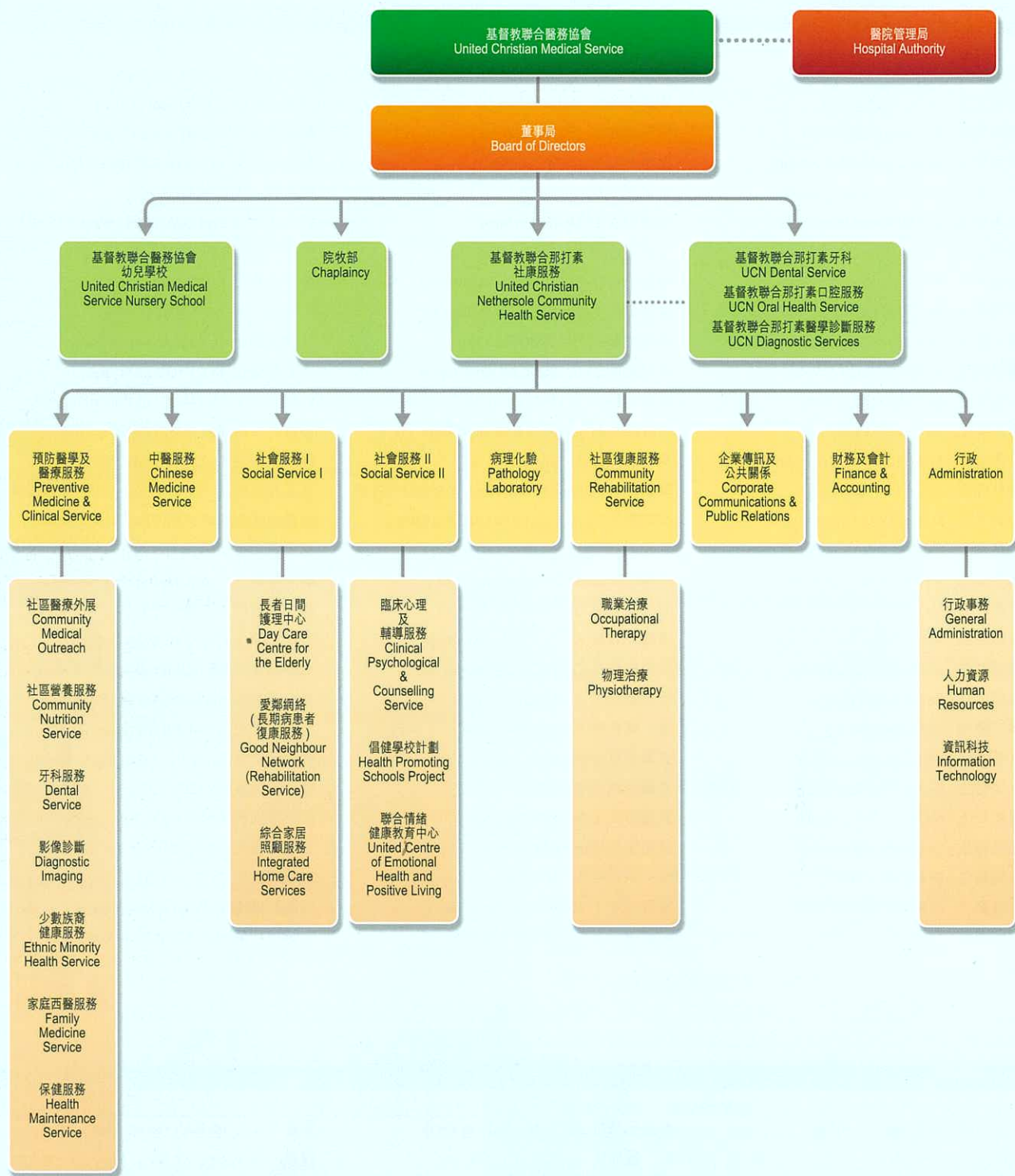
主席	Chairman
李國謙先生	Mr LI Kwok Heem, John, MH
副主席	Vice-Chairman
莫裕生先生 *	Mr MOK Yu Sang, Wilson*
委員	Members
周恩慈女士	Ms CHOW Yan Tse, Margot
馮壽松先生 #	Mr FUNG Sau Chung #
梁萬福醫生	Dr LEUNG Man Fuk, Edward
蒲錦昌牧師	Rev PO Kam Cheong
曾福全先生	Mr TSANG Fuk Chuen, Thomas
徐贊生主教	Rt Rev TSUI Tsan Sang, Louis
黃婉玲女士	Ms WONG Yuen Ling, Grace
陳文寬先生 *	Mr CHAN Man Foon, Derek*
陳崇一醫生 *	Dr CHEN Chung I, Raymond*
周近智律師 *	Mr CHOW Kun Chee, Roland*
李志華先生 *	Mr LEE Chee Wah, Roger*
梁明娟醫生 *	Dr Pamela LEUNG, JP*
梁和平先生 *	Mr LEUNG Wo Ping, BH, JP*
蕭壽澄長老 *	Elder SIU Sau Ching*
當然委員	Ex-Officio Members
徐德義醫生 (至 2017 年 8 月 6 日)	Dr CHUI Tak Yi (up to 6.8.2017)
譚錦添醫生 (由 2017 年 8 月 7 日)	Dr TOM Kam Tim (since 7.8.2017)
湛偉民先生	Mr CHAM Wai Man, Terence
岑素圓女士	Ms SHAM So Yuen, Alice
馮淑姿女士 *	Ms FUNG Shuk Chi, Gigi*
文志賢醫生 *	Dr MAN Chi Yin*
蘇國安先生 *	Mr SO Kwok On, Christopher*
秘書	Secretary
羅澤泉先生	Mr LAW Chak Chuen, Alex
基督教聯合那打素社康服務 總幹事	Executive Director, UCNCHS
列席委員	Observers
唐少芬醫生	Dr TANG Shao Fen, Joyce
基督教聯合那打素社康服務 醫務總監	Medical Director, UCNCHS
朱賢玲女士	Ms CHU Yin Ling, Maggie
基督教聯合那打素社康服務 高級經理 (財務及會計)	Senior Manager, Finance & Accounting, UCNCHS

* 由雅麗氏何妙齡那打素慈善基金會董事局提名
Nominated by Alice Ho Miu Ling Nethersole Charity Foundation (AHNCF)

於 2018 年 9 月 11 日去世 Passed away on 11.9.2018

基督教聯合醫務協會組織架構

Organization Chart of United Christian Medical Service



..... 諮詢 Advisory

基督教聯合那打素社康服務 United Christian Nethersole Community Health Service



基督教聯合那打素社康服務
United Christian Nethersole Community Health Service

預防醫學及醫療服務

家庭西醫服務

- 我們於 2017 至 18 年度為 88,222 人次提供服務，當中 29.4% 為 65 歲或以上長者，同時有 10,373 人次受惠於長期病患跟進服務。
- 服務使用者對預防性服務的需求繼續殷切，包括疫苗注射、女士保健服務、基層和二級預防醫療服務。
- 我們參與的「公私營協作計劃」包括：醫院管理局之「普通科門診公私營協作計劃」、衛生署之「大腸癌篩查先導計劃」及「子宮頸普查計劃」，我們至今已分別為 850 人次，1,219 人次及 79 名婦女提供相關服務。



為病人安排篩查服務
Screening service for patients

- 由余兆麒醫療基金贊助「讓孩子活出亮麗人生計劃」，至今已 有 60 名專注力不足或過度活躍症兒童獲得專業評估，並由精神科醫生處方藥物及跟進治療。



全面的醫療服務
Comprehensive medical & clinical services

Preventive Medicine & Clinical Service

Family Medicine Service

- Our clinics recorded a total patient attendance of 88,222 in the year 2017-18, 29.4% of whom were elderly aged 65 or above and a patient attendance of 10,373 was recorded for the chronic disease follow-up services.
- Clients demanded for preventive care remained high, especially vaccination, well-woman clinic and primary and secondary prevention which was an indicator of community health need.
- The Public-Private Partnership Programs we participated included "General Outpatient Clinic Public-Private Partnership Program" by Hospital Authority, "Colorectal Cancer Screening Pilot Program" and "Cervical Screening Program" by the Department of Health. So far, we provided related services for a total of 850, 1,219 and 79 respectively.
- With the funding support from the S.K. Yee Medical Foundation, we provided a community based medical specialist service for 60 children with attention deficit or hyperactivity disorder.

Dental Service

- Staffed by ten dental service officers, our six dental clinics provided services such as general dentistry, implant and orthodontics. The total service attendance reached 26,474 in the year 2017-18.
- We continued to participate in the Community Care Fund Elderly Dental Assistance Program, providing subsidized dentures and other related necessary dental services for the low-income elderly aged 60 or above.



專業及全面的牙科服務
Professional and comprehensive dental service

基督教聯合那打素社康服務

United Christian Nethersole Community Health Service

牙科服務

- 我們轄下共有六間牙科診所，十位牙科醫生為市民提供基本牙科、植牙、矯齒等服務。於 2017 至 18 年度的服務總人次為 26,474。
- 我們繼續參與「關愛基金長者牙科服務資助項目」計劃，成為「關愛牙醫診所」一分子，為 60 歲或以上有需要的低收入長者，提供安裝活動假牙或其他必須的牙科診療服務資助。

社區醫療外展

- 為防止社區流感爆發，我們本年度舉辦了超過 400 場外展疫苗注射活動，為接近 36,000 名地區人士注射預防流感疫苗。當中包括大約 800 名幼稚園學生、10,100 名小學生、7,000 中學生及 9,800 名 65 歲或以上長者。
- 我們亦為超過 200 名中學生及大學生注射人類乳頭瘤病毒 HPV 疫苗及為接近 100 名於工地工作之人士注射預防破傷風疫苗。
- 我們繼續協助地區團體、學校及私營機構舉辦不同類型的健康講座，另外又提供「至 Fit 人生外展健康檢查」計劃，反應理想，總服務人數於本年度接近 700 人。

保健服務

- 於 2017 至 18 年度參加成人保健計劃之 18 歲或以上人士共 12,278 人次；另外，參與「香港賽馬會資助計劃 — 社區長者保健計劃」的 60 歲或以上人士多達 4,500 人次；而參與「賽馬會樂活長者『健』社區」的 70 歲或以上人士有 136 人次。
- 我們探訪了 412 名 65 歲或以上的地區獨居長者，評估他們的家居安全，並提供基本健康檢查及長者衰退評估、健康教育及轉介治療服務。
- 我們連續第七年參加由運輸署主辦的「至 fit 安全駕駛大行動 — 商用車司機健康測試」，為 1,711 位商用車輛的司機提供健康檢查。

社區營養服務

- 在香港公益金的部分資助下，註冊營養師團隊繼續為市民提供各項全面、專業及優質營養服務，包括為 4,166 人次提供體重管理及三高的相關飲食輔導。



社區營養服務獲最佳臨床個案報告發表獎項
Our dietitians received the best clinical case presentation award

Community Medical Outreach

- To prevent outbreak of influenza in the community, we conducted more than 400 outreach vaccination campaigns in the year and administering influenza vaccinations to nearly 36,000 people, including approximately 800 kindergarten students, 10,100 primary school students, 7,000 secondary school students and 9,800 senior citizens aged 65 or above.
- We also provided HPV vaccine injections to over 200 secondary schools and university students and nearly 100 tetanus vaccine injections to workers at the construction sites.
- We continued to organize health talks for local groups, schools and private organizations. In addition, our on-site mini-health check program "Fit & Smart" received good response and a total number of service attendance was close to 700.

Health Maintenance Service

- In the year 2017-18, our adult health maintenance program recorded an attendance of 12,278 adults aged 18 or above. Besides, an attendance of 4,500 elderly aged 60 or above joined the "Hong Kong Jockey Club Community Project Grant: Community Geriatric Health Maintenance Program", and 136 elderly aged 70 or above joined the "Jockey Club District Primary Care Program for the Elderly".
- We paid 412 home visits to singletons aged 65 or above, providing home safety assessment, basic health and frailty assessment, individual health education and referral services.
- For the seventh consecutive year, we joined the Transport Department's "Safe Driving and Health Campaign for Commercial Vehicle Drivers", offering health check-ups for 1,711 commercial vehicle drivers.

Community Nutrition Service

- Partially supported by the Community Chest, our team of registered dietitians continued to provide the general public with diversified, professional and quality nutrition services. The total number of service attendance participated in individual diet counselling with major focus on weight control and "three highs" dietary advice was 4,166.
- We received the best clinical case presentation award in September 2017 at the Hong Kong College of Family Physicians 40th Anniversary Conference that demonstrated our dietitian's academic merit and professionalism.
- With the grant from the Committee on Reduction of Salt and Sugar in Food, we co-organized with the Kowloon City District Council to launch a district wide nutrition promotion project with the theme of "Reduction of Salt and Sugar" from July 2017 to January 2018. This project directly reached 3,876 primary school students and 170 parents, and a total of 21 restaurants joined as promotion partners.

基督教聯合那打素社康服務 United Christian Nethersole Community Health Service

- 2017年9月我們於香港家庭醫學學院成立40週年院慶舉辦之學術研討會上，發表了一個有關糖尿病友臨床個案之報告，獲得學院頒發「最佳臨床個案報告發表之獎項」，肯定了社區營養之服務成效。
- 承蒙「降低食物中鹽和糖委員會」的贊助，我們與「九龍城區議會」合作，於2017年7月至2018年1月期間向九龍城區內小學、幼稚園及食肆推廣「少鹽少糖由我話事」計劃，直接受惠小學生人次達3,876人、家長人次達170人及成功與區內21間食肆合作成為計劃推廣伙伴。
- 我們為學校、團體及公司舉辦共61場營養專題講座，為2,323人次灌輸營養飲食的重要性。亦於機構Facebook專頁刊登「週三營養貼士」、接受電視及電台之訪問，為大眾提供富趣味性及正確的營養資訊。



香港公益金入會、預算及分配委員會將撥款交予機構代表
Cheque presented by the Admission, Budgets & Allocations Committee, The Community Chest of Hong Kong

影像診斷部

- 本年度我們共提供26,827人次服務，當中22,715人次接受普通X光檢查，1,490人次接受超聲波掃描檢查，2,006人次接受雙能量X光骨質密度檢查，616人次接受乳腺X光造影檢查。
- 我們提供雙能量X光骨質密度檢查服務優惠予地區人士，而賽馬會天水圍社區健康中心則繼續與博愛醫院及屯門醫院合作，為病患者提供雙能量X光骨質密度檢查、乳腺X光造影及部分超聲波掃描檢查，可享折扣優惠。

病理化驗服務

- 病理化驗服務團隊繼續堅守以專業態度，提供多種病理測試，為不同專科醫生、病人以及市民大眾提供全面、快捷及價格相宜的病理診斷服務。於2017至18年度，我們共服務35,895人次。



病理化驗服務由獲專業資格的化驗師操作
Pathology Laboratory operated by committed professionals

- 我們已經展開及籌備遷入基督教聯合醫院J座及申請香港實驗所認可計劃(HOKLAS)之工作。

- We held 61 talks or trainings for schools, agencies and companies, altogether reaching a total attendance of 2,323. We also regularly uploaded "Wednesday Nutrition Tips" on the UCN Facebook page as an interesting nutrition education section and met with TV and radio shows to share accurate nutrition information with the general public.

Diagnostic Imaging Service

- During the year, the total service attendance reached 26,827 including 22,715 for general X-ray, 1,490 for ultrasonic, 2,006 for DEXA and 616 for mammography examinations.
- We offered discount on DEXA examinations. Besides, Jockey Club Tin Shui Wai Community Health Centre continued to partner with Pok Oi Hospital and Tuen Man Hospital to offer patients with discount on DEXA examinations, mammography and some ultrasound examinations.

Pathology Laboratory

- Our team strives to provide professional services continuously. We offer comprehensive, rapid and affordable pathology diagnostics services to medical specialists, patients and general public. A total of 35,895 headcounts were served in the year 2017-18.
- Preparation work for relocation to Block J of the United Christian Hospital and the Hong Kong Laboratory Accreditation Scheme (HOKLAS) was in the pipeline.

Community Rehabilitation Service

- Our professional team of community rehabilitation services consists of experienced physiotherapist and occupational therapists.
- Quality rehabilitation services were provided for a large variety of elderly service organizations in the community in the year 2017-18, including community health care and fall prevention, integrated home care services and integrated discharge support service for elderly.

基督教聯合那打素社康服務

United Christian Nethersole Community Health Service

社區復康服務

- 我們的專業團隊由經驗豐富的物理治療師及職業治療師組成。
- 我們於 2017 至 18 年度繼續為各區之不同長者服務機構提供優質復康治療服務，包括社區防跌及保健計劃、綜合家居照顧服務及長者離院支援等。



物理治療師為長者服務
Physiotherapists providing service for the elderly

- 遷往基督教聯合醫院 J 座新址的準備工作如火如荼，亦正積極拓展為特殊教育需要兒童而設的職業治療服務及籌備為中小學生提供外展的職業治療服務。
- 我們於觀塘區和大埔區的社區健康中心提供一系列適切的物理治療服務，包括關節檢查、頸椎和腰椎牽引、干擾電流治療、超聲波治療、冷熱療法、手法舒整治療、針灸穴位療法、復康運動和跌倒風險評估等。
- 我們於本年度共提供 684 次家訪、991 節機構治療服務、16 次訓練課程及 1,322 節個別物理治療服務，總服務人次達 8,475。

健康教育及推廣

少數族裔健康服務

- 南亞裔健康支援計劃 (公益金資助)
 - 我們於 2017 至 18 年度與 43 間機構伙伴合作 (包括非牟利組織、學校、宗教團體、專上學院及醫院) 提供共 14,217 次健康檢查，項目包括量度血壓、血糖、膽固醇、身體脂肪百分比及子宮頸抹片檢查、血紅蛋白檢查和心血管疾病危機評估。



世界糖尿病日 2017
World Diabetes Day 2017

- Preparation work for relocation to new site at Block J of the United Christian Hospital was in full swing. We were actively expanding the centre-based occupational therapy service for children with special education needs (SEN) as well as the outreach occupational therapy training for the students in secondary and primary schools.
- We offered a comprehensive range of physiotherapy services in our community health centres in Kwun Tong and Tai Po, including body joint check-ups, cervical and lumbar traction, interferential therapy, ultrasound therapy, cold-and-hot therapy, manual therapy, acupuncture, rehabilitation exercises and fall risk assessments.
- We provided 684 home visits, 991 institution treatment sessions, 16 training courses and 1,322 sessions of physiotherapy treatment this year. The total service attendance was 8,475.

Health Education and Promotion

Ethnic Minority Health Service

- South Asian Health Support Program (Funded by the Community Chest of Hong Kong)
 - Supported by 43 organizations (NGOs, schools, religious bodies, universities and hospitals), we provided 14,217 health screenings including measurements of blood pressure, blood sugar, cholesterol, body fat, cervical smear test, heart health check and hemoglobin test in the year 2017-18.
 - 72 health talks, with 2,528 attendances, were held at community level. 154 home visits were also conducted to promote healthy lifestyle and home safety for children.
 - 74 people registered as volunteers providing 2,277 service hours including 649 service hours by the youth volunteers.
 - Altogether 8,000 copies of quarterly multilingual (including English, Hindi, Nepali, Punjabi and Urdu) newsletters were produced and distributed in the community.



外展健康推廣
Outdoor Health Campaign

基督教聯合那打素社康服務 United Christian Nethersole Community Health Service

- 我們於社區舉辦了 72 場健康講座，出席人次為 2,528。我們亦進行了 154 次家訪，宣傳健康生活及兒童家居安全。
- 74 人登記成為義工，提供共 2,277 小時服務，其中 649 服務時數由青少年義工提供。
- 我們於社區派發 8,000 份以五種不同語言寫成的季刊 (包括：英文、印度語、尼泊爾語、旁遮普語和烏爾都語)。
- 少數族裔及新移民戒煙服務 (衛生署控煙辦公室資助)
 - 本年度共有 218 位吸煙人士於社康健康中心接受戒煙治療。
 - 我們共舉辦 13 場大型的戒煙宣傳活動 (包括「世界無煙日 2017」)，吸引 2,261 人參與。同時，我們亦於社區舉辦了 29 場吸煙與健康及戒煙講座，錄得 770 人參與。
 - 本年度安排了 88 次外展的戒煙宣傳活動，並有 28 位人士接受訓練成為戒煙大使，向公眾推廣戒煙。



戒煙計劃展覽
Smoking Cessation Program Exhibition

- 幫助外藉家庭傭工計劃 (余兆麒醫療基金贊助資助)
 - 本年度為 501 位外藉家庭傭工提供子宮頸抹片 (柏士抹片) 檢查，及為當中 38 個細胞異常個案提供 HPV DNA 檢測、10 個案提供陰道鏡檢查。

報告發表

- 預防醫學及醫療服務團隊本年度分別於醫院管理局研討大會 2017、香港家庭醫學學院四十周年研討會、衛生醫護研討會 2017、「全力邁向無煙香港」會議暨「香港控煙三十五周年」慶祝典禮及衛生署等發表了 20 份不同範疇的學術報告。

- **Smoking Cessation Service for Ethnic Minorities and New Immigrants (Funded by the Tobacco Control Office, Department of Health)**



世界無煙日 2017
World No Tobacco Day Event 2017

- During the year, a total of 218 smokers received quit smoking treatment at UCN clinics.
- We hosted a series of smoking cessation promotion events including 13 large scaled events (including “World No Tobacco Day Event 2017”) with an attendance of 2,261 and 29 health talks related to smoking versus health and smoking cessation methods with an attendance of 770 at the community level.
- 88 outreach sessions were conducted to reach out the smokers and 28 Quit Smoking Ambassadors were trained to promote smoking cessation to the general public.
- **Helping the Helpers - Women's Health Project for Domestic Helpers (Funded by the SK Yee Medical Foundation)**
 - 501 cervical smear (Pap Smear) tests were provided for domestic helpers, of which 38 cellular abnormal cases were provided with HPV DNA test and 10 cases were provided with colposcopy test.

Presentations

- The Preventive Medicine & Clinical Service team delivered a total of 20 presentations in various areas at the Hospital Authority Convention 2017, HKCFP 40th Anniversary Conference, Health Research Symposium 2017, “Towards a Tobacco Endgame in Hong Kong” Conference cum 35th Anniversary of Tobacco Control in Hong Kong and the Department of Health.

Health Talks and Health Promotion Activities

- All divisions altogether conducted 438 health talks that reached a total attendance of 19,042 while our 881 health workshops/classes drew an attendance of 34,228.
- To put corporate social responsibility into practice, UCN joined the Caring Company Scheme 2017 and collaborated with Alliance Construction Materials Limited, Pfizer Corporation Hong Kong Limited, Hantec Pacific Limited, BioCycle (Hong Kong)

基督教聯合那打素社康服務

United Christian Nethersole Community Health Service

健康講座及健康推廣活動

- 各部門共舉辦了 438 場健康講座，吸引多達 19,042 人次參與。另有 34,228 人次參與我們舉辦的 881 場健康工作坊/ 課程。



「商界展關懷社區伙伴合作展 2017」推廣健康旅遊諮詢服務
Promoted "Travel Health Consultation Service" at The Caring Company Partnership Expo 2017

- 機構參與由香港社會服務聯會主辦的「商界展關懷社區伙伴合作展 2017」，我們與友盟建築材料有限公司、美國輝瑞科研製藥有限公司、亨達集團、生機源（香港）有限公司、愛普生香港有限公司、澧信工程顧問有限公司及黛麗斯國際有限公司合作，透過舉辦不同的社區活動、捐助及資助員工接受健康檢查服務等，攜手實踐企業社會責任。
- 機構獲邀參與運輸署於 2017 年 12 月 15 日舉行的「至 Fit 安全駕駛大行動」打氣大會，向商用車司機及大眾宣揚健康資訊，並擺放講解骨骼健康、體重管理及健康飲食等資訊的展板。
- 承蒙「香港賽馬會慈善信託基金」的支持，資助本機構開展「賽馬會樂活長者『健』社區」計劃，每年為 1,100 名 65 歲或以上長者免費提供跨專業護理，服務範圍包括健康、生活狀況、家居安全、長者衰老評估及其他所需之轉介治療，讓長者在家中安享晚年，紓緩家人對照顧長者之壓力。



賽馬會樂活長者「健」社區啟動禮
Launching Ceremony of Jockey Club District Primary Care Program for the Elderly

Limited, Epson Hong Kong Limited, J. Roger Preston Limited and Top Form International Limited in the year 2017-18 to host activities, make donations, subsidize health check-ups for staff and provide staff with talks workshops, etc.



機構代表與商界展關懷社區伙伴之代表合照
Photo taken with a Caring Company representative

- We were invited by the Transport Department to share health information at a ceremony of the "Safe Driving and Health Campaign for Commercial Vehicle Drivers" on 15 December, 2017 with commercial vehicle drivers and participants. During the event, exhibition panels on bone health, weight management and healthy diet were also set up.
- Funded by the Hong Kong Jockey Club Charities Trust, the "Jockey Club District Primary Care Program for the Elderly" provided 1,100 free multidisciplinary healthcare services to elderly aged 65 or above every year. The scope of services included health, life habits, home safety and elderly frailty assessments as well as other necessary referral treatments that allowed the elderly to enjoy their life at home and relieve carers' pressure.

Chinese Medicine Service

- Our seven Chinese Medicine service units (Tai Po, Sau Mau Ping, Fu Heng, Wo Lok, Kwong Fuk, Tin Shui Wai and Cheerful Court) provided general consultation covering internal medicine, acupuncture, bone-setting/tui-na, Chinese medicine specialty and body point adhesive-plaster, supplemented with herbs or granule dispensary, decoction and Chinese Medicine Health Nurturing Scheme.



中醫師提供診症服務
Consultation provided by Chinese Medicine Practitioner

基督教聯合那打素社康服務

United Christian Nethersole Community Health Service

中醫服務

- 7 個中醫服務點（大埔、秀茂坪、富亨、和樂、廣福、天水圍、彩頤）分別提供內科、針灸、骨傷推拿、中醫專病和穴位敷貼門診服務，兼有中草药或中藥顆粒沖劑、代煎中草药及中醫保健養生計劃。



中醫診所提供可靠的濃縮中藥配方顆粒
Our clinics provided reliable concentrated Chinese medicine granules

- 於 2017 至 18 年度之診症服務人次為 125,550，中醫健康諮詢及中醫講座服務人次為 3,126。
- 我們於年內積極籌劃發展一所大規模中醫專科服務中心，專注各專病之治療和科研發展，期望能為患者提供一站式的中醫診療及預防保健服務。

社會服務

綜合家居照顧服務

- 綜合家居照顧服務隊為大埔區內 60 歲或以上的體弱長者、殘疾人士及需要社區支援的家庭提供膳食、個人護理、健康護理、護送、簡單運動、家務協助及購物等服務，好讓他們能在社區中健康和快樂地生活，於 2017 至 18 年度服務共 31,257 人次。
- 此外，我們更為 512 人次提供增值服務，當中包括由蘋果日報慈善基金贊助之「節日加飯飯」活動、大埔民政事務處舉辦之「共慶回歸關懷」活動、銀杏館及香港中華煤氣有限公司贊助生果及月餅及與其他機構合作之探訪及剪髮活動等。本年度，團隊合共舉辦了 9 次活動及 9 次家居探訪，讓服務使用者得到適切的照顧和關懷。



教會義工探訪獨居長者
Volunteers from church paid home visit to singleton elderly

- In the year 2017-18, the total service attendance of our consultation services was 125,550 and that of free Chinese medicine health consultations and seminars were 3,126.
- We actively planned to develop a large-scale Chinese Medicine specialty centre with focus on the treatment and research development of various diseases hoping to provide patients with one-stop medical treatment and preventive health care services.

Social Service

Integrated Home Care Services

- To enable the physically frail elderly aged 60 or above, people with disabilities and the needy families in Tai Po to stay healthy and live happily in the communities, our team provides services such as meal provision, personal care, simple nursing care, escort, general physical exercises, general domestic duties, purchase and delivery of daily necessities. The total service attendance reached 31,257 in the year 2017-18.



舉辦園藝治療小組一同製作盆栽
Potted plant made in the horticultural therapeutic group

- Besides, 512 beneficiaries received value-added services, including "Festive Dishes" events sponsored by Apple Daily Charitable Foundation, "Caring Activity" organized by the Tai Po District Office to share the joy with the deprived groups, fruits and mooncakes sponsored by the Gingko House and the Hong Kong and China Gas Limited (Towngas) and "Hair-cut" and home visit events collaborated with different agencies. In total, we organized 9 programs and 9 home visits to provide proper care for the service users.



暢遊香港迪士尼樂園
Visited the Hong Kong Disneyland

基督教聯合那打素社康服務

United Christian Nethersole Community Health Service

愛鄰網絡

- 承蒙觀塘區議會 — 健康屋邨計劃、老有所為活動計劃 2017-18、牽手·香港、尼爾森金公司、香港社會服務聯會、香港理工大學、匯豐香港社區夥伴計劃、香港賽馬會慈善信託基金及友盟建築材料有限公司的贊助支持，我們於本年度分別舉辦「不『鬱』不撓樂身心」、「愛『笑』愛『鄰』顯關愛」、「夏日自助餐·古埃及探索之旅」、「樂齡科技博覽暨高峰會」、「理工大學 — 社區服務日」、「織織自喜·樂營型」、「心花放」及「友盟友鄰聖誕歡聚」計劃，透過不同類型的興趣小組，戶外旅行、參觀、家居探訪、節慶活動、嘉年華及健康主題活動等，為超過 3,140 人次提供服務，讓長期病患者互相認識，建立支援網絡，一同積極面對人生。



會員參加愛笑瑜珈小組
Members participated in the Laughter Yoga training class

- 我們獲得不少機構、私人企業及社區人士捐贈，包括現金、節日禮物包、月餅、食品、衣物、日用品、節日手作飾物、棉被、復康器材用品、玩具及香港迪士尼樂園門券等，超過 2,978 人次受惠。我們亦與不同的非牟利機構、義工團體、教會及專上院校等合作，探訪超過 3,363 人次，為獨居及有需要的長期病患者送上關懷。

鯉魚門長者日間護理中心

- 本中心致力為觀塘區 60 歲或以上患有長期病患、行動不便和自理能力較低的長者，提供適切的日間護理服務，包括護理、膳食、復康訓練、治療小組、社交及康樂活動、接載服務及護老者支援等。本年度，我們共為 80 名長者提供 11,564 次日間照顧。



暢遊觀塘年宵花市
Visited Kwun Tong New Year Market

Good Neighbour Network

- Funded by Kwun Tong District Council – Kwun Tong Health City Project, Opportunities for the Elderly Project 2017-18, HandsOn HONG KONG, The Nielsen Company (Hong Kong) Limited, The Hong Kong Council of Social Service, The Hong Kong Polytechnic University, HSBC Hong Kong Community Partnership Program, The Hong Kong Jockey Club Charities Trust and Alliance Construction Materials Limited, we organized a series of programs including “Care with love for depression”, “Love laughing, Love your neighbor”, “Summer buffet • Explore Egyptian”, “Gerontech and Innovation Expo Cum Summit”, “Polytechnic University-Community Service Day”, “High Fiber & Healthy Living”, “Heart blossom” and “Joyful Christmas Together”. Over 3,140 participants were served through various activities such as different kinds of interest groups, outdoor activities, visiting, home visits, celebration activities, carnivals, and activities with “health” as the theme. These programs served as an avenue for the chronically ill to make friends, so that they could build up a positive lifestyle and broaden their social support networking.



會員一起共晉午飯慶冬至，感受節日的溫馨
Members had lunch together and shared the warmth of Winter Solstice Festival

- We received considerable donations from different agencies, private corporations and community in the form of cash, gift bags for festivals, mooncakes, food, clothes, daily necessities, hand-made decoration, quilt, rehabilitation aids, toys and free Hong Kong Disneyland tickets, reaching over 2,978 beneficiaries. We collaborated with non-government organizations, volunteer agencies, churches and tertiary institutions to pay home visits to more than 3,363 singletons or chronic illness patients in need and gave warmth to them.

Lei Yue Mun Day Care Centre for the Elderly

- We serve elderly aged 60 or above in Kwun Tong district who suffer from long-term illness, low mobility or lack of self-care ability. We address the needs of the elderly and provide appropriate day care services, including nursing care, meal service, rehabilitation exercise, treatment group, social and recreational activities, escort service and the support to caregivers. During the year, we served 80 elderly members and recorded 11,564 service attendances.
- In addition to physical needs, we also care about the social and spiritual needs of the elderly. We partnered with the Christian and Missionary Alliance Yau Tong Church quarterly to organize

基督教聯合那打素社康服務 United Christian Nethersole Community Health Service

- 除了身體需要外，中心亦照顧到長者的社交及靈性需要，與油塘宣道會合作，每季舉辦一系列福音性活動，讓更多長者認識主耶穌。中心亦按節日舉辦節慶活動、旅行活動及新春遊花市，及透過舉辦硬地滾球班，畫畫班及歌詠小組等興趣班，讓長者發揮所長，增加自信和生活趣味。我們更舉辦家屬支援小組及茶聚活動，支持及減輕照顧者壓力。
- 中心活動得到不同機構的支持，如亨達集團贊助的「亨達送暖賀聖誕」活動，讓會員在聖誕節感受歡樂的氣氛，並向長者傳揚愛的訊息。中心本年度亦獲得多個不同的義工團體探訪支持，包括：香港科技大學、觀塘民聯會、苗氏國際幼稚園、明愛鯉魚門幼兒學校等。義工們向長者送上愛和關心，不但帶給長者溫暖，亦促進了長幼共融。



義工參與長者手工藝小組
Volunteers participated in the Elderly Handicrafts Group

聯合情緒健康教育中心

- 我們致力為大眾及專業人士提供全面服務，包括心理輔導、臨床心理服務、特殊教育需要兒童評估、治療小組和正向心理學講座及工作坊，亦請來海外及本地專業人士/學者主持專業工作坊，講解各種心理治療和介入手法。
- 為讓有特殊教育需要之兒童獲得更全面服務，除恆常的評估及輔導服務外，我們增設了職業治療評估及輔導服務。
- 應用正向心理學於生活之中是中心的理念。中心的正向心理學專業培訓包括講座及工作坊，廣受大專院校、慈善團體、中小學和私營機構歡迎，於 2017 至 18 年度共舉辦了 203 場。
- 本年度我們再次邀請 Robyn D. Walser 博士來港為中心進行三天的「接納與承諾療法」進階工作坊，並成功招募逾 100 名本地專業人士參與。此外，我們亦邀請三位本地資深導師講解各種心理治療模式、介入手法及臨床技巧，吸引了超過 190 名專業人士參加，並獲得正面迴響。
- 倡健學校計劃致力提倡全人健康的概念，為本港中小學提供有關身心健康的教育活動。我們於 2017 至 18 年度為 14 間小學及 13 間中學的學生、教職員及家長提供服務，總服務人次為 7,702。

a series of evangelical activities to help members know gospel. We also organized festive events, outings and Flower Market visit. Boccia, painting and singing classes were held to enrich the ageing life of the elderly. Caregiver Support Group and tea gathering were also arranged to support and relieve the pressure on carers.



中心為長者舉辦耆樂迎新歲 2018 團年
Centre hosted Happy New Year for the Elderly 2018

- Our centre's activities were supported by different organizations, such as the Christmas activity sponsored by Hantec Pacific Limited in which our members enjoyed the festive atmosphere and love from the volunteers. Besides, we received support from a wide range of volunteer groups, including The Hong Kong University of Science and Technology, Kwun Tong Resident Association, Mills International Pre-school, Caritas Nursery School - Lei Yue Mun, etc. They not only gave love and warmth to the elderly, but also promoted intergenerational harmony and rapport between the elderly and the youngsters.

United Centre of Emotional Health and Positive Living

- Our centre is dedicated to providing the general public and professionals with comprehensive services, including psychological counselling, and clinical psychological services, assessment for special educational needs (SEN), treatment groups as well as positive psychology workshops and talks. We also provide professional training workshops conducted by local and overseas trainers, covering different psychotherapies and intervention techniques. It has always been our hope to serve those facing emotional distress so as to help them deal with emotional problems and difficult moments in different stages of life.
- In order to provide more holistic services for the children with special educational needs, we introduced the occupational assessment and treatment services.
- Applying positive psychology into daily life is our principal rationale. The signature professional training workshops and talks on positive psychology were welcomed by tertiary institutions, charity organizations, schools and private sectors, with 203 sessions held during the year in 2017-18.

基督教聯合那打素社康服務 United Christian Nethersole Community Health Service

- 有賴基督教聯合醫務協會、雅麗氏何妙齡那打素慈善基金會、觀塘區議會觀塘健康城市督導委員會及基督教永明基金的贊助，我們於年內舉辦多元化的健康教育活動予學童及社會大眾，更資助有經濟困難而受情緒困擾人士接受心理輔導服務。



基督教永明基金贊助的「喜樂中得力」工作坊
An educational workshop funded by 基督教永明基金

- 本中心於 2018 年 1 月遷往基督教聯合醫院 J 座繼續為社會大眾提供服務。

- We were honored to have Dr. Robyn D. Walser conducted a 3-day advanced training workshop on Acceptance and Commitment Therapy (ACT) for us again. More than 100 professionals attended this workshop. Besides, three local trainers held professional training workshops on various psychotherapies, psychological approaches and intervention skills and more than 190 professionals attended. Overall, the workshops ended with great success.



專業培訓工作坊
Professional training workshop hosted by Dr. Robyn D. Walser

- Health Promoting Schools Project aims at promoting holistic health to primary and secondary schools in Hong Kong through holding activities with a focus on physical and mental health. We provided services to 14 primary schools and 13 secondary schools in the year 2017-18, benefitting an attendance of 7,702 students, staff and parents.
- With empathic support from United Christian Medical Service, Alice Ho Miu Ling Nethersole Charity Foundation, the Kwun Tong Healthy City Steering Committee of Kwun Tong District Council and 基督教永明基金，we launched various educational programs for students and general public. Financial subsidies for psychological counselling service were provided for the people in need.
- Our centre was relocated to Block J of the United Christian Hospital in January 2018 to continuously provide mental health related services to the general public.

基督教聯合那打素社康服務

United Christian Nethersole Community Health Service

2017 至 18 年度服務數字統計
Service Statistics in 2017-18

服務人次
No. of Service Attendance

預防醫學及醫療服務 Preventive Medicine & Clinical Service	
家庭西醫服務 Family Medicine Service	88,222
牙科服務 Dental Service	26,474
社區醫療外展 Community Medical Outreach	37,487
社區營養服務 Community Nutrition Service	6,603
成人保健服務 Adult Health Maintenance Service	12,888
老人保健服務 Geriatric Health Maintenance Service	5,135
影像診斷 Diagnostic Imaging Service	26,827
南亞裔健康支援計劃 South Asian Health Support Program	21,834
少數族裔及新移民戒煙計劃 Smoking Cessation Program for Ethnic Minorities and New Immigrants	3,438
幫助外籍家庭傭工計劃 Helping the Helpers - Women's Health Project for Domestic Helpers	501
醫學口譯培訓課程 Medical Interpretation Training Course	35
病理化驗 Pathology Laboratory	
病理化驗服務 Pathology Laboratory Service	35,895
社區復康服務 Community Rehabilitation Service	
社區復康服務 Community Rehabilitation Service	8,475
中醫服務 Chinese Medicine Service	
內科 Internal Medicine	70,361
針灸 Acupuncture	48,154
天灸 Tianjiu	3,881
骨傷推拿 Bone-setting / Tui-na	1,647
中醫講座及中醫問診 Chinese Medicine Seminar and Consultation	3,126
專科 Specialty	1,507
社會服務 I Social Service I	
長者日間護理中心 Day Care Centre for the Elderly	13,705
綜合家居照顧服務 Integrated Home Care Services	31,769
愛鄰網絡 Good Neighbour Network	95,917
社會服務 II (聯合情緒健康教育中心) Social Service II (United Centre of Emotional Health & Positive Living)	
講座 / 工作坊 / 專業培訓 Talk / Workshop / Professional Training	2,042
倡健學校計劃 Health Promoting Schools Project	7,702
臨床心理治療 Psychological Treatment	1,015.5 (小時 / Hours)
健康推廣活動 Health Promotional Activities	
傳媒 Mass Media	699 (篇 / Articles)
義工服務 Volunteer Service	20,801 (小時 / Hours)
學生實習機會 Student Placement Opportunities	72

* 服務人次指包括相關講座、小組及課程、展覽及活動之服務出席者總數。
No. of Service Attendance means the total number of attendees at our services including talks, groups and classes as well as exhibitions and events.

論文著作

Paper Published

United Christian Nethersole Community Health Service

Gurung S.

Health and Cultural Diversity. Oral presentation at Hospital Authority Convention 2017; May 17; Hong Kong, China.

Lau PS, Chan TM, Mok WS, Lo MS, Leung SN, Leung HK, Lee KL.

餐餐智慳有營 (Healthy menu planning on a budget). Poster presentation at Health Research Symposium 2017; June 16; Hong Kong, China.

Lau PS, Chan TM, Mok WS, Lo TW, Lo MS, Leung HK, Lee KL.

Love veg at workplace. Poster presentation at Health Research Symposium 2017; June 16; Hong Kong, China.

Lau PS, Lo MS, Chan TM, Mok WS, Lee KL, Leung HK.

Dash a day – community promotion programme. Poster presentation at Health Research Symposium 2017; June 16; Hong Kong, China.

Lau PS, Lo MS, Mok WS, Chan TM, Lo TW, So YY, Lau TH, Lee KL, Leung HK.

Food label reading for stylish eating – community promotion programme. Poster presentation at Health Research Symposium 2017; June 16; Hong Kong, China.

Lau PS, Lo MS.

Case Study: The role of community dietitians in delivering team care approach and patient-centered therapy for a patient with Type 2 Diabetes. Clinical Case Presentation Competition (Team 2) at The Hong Kong College of Family Physicians' 40th Anniversary Conference From Seedling to Forest-Ever Enriching Primary Care 2017; September 2-3; Hong Kong, China.

Lau PS, Chan TM, Mok WS, Lo MS.

Effectiveness of medical nutrition therapy provided by dietitians in the management of hyperlipidemia in Chinese obese/overweight patients at community clinic in Hong Kong. Poster presentation at The Hong Kong College of Family Physicians' 40th Anniversary Conference From Seedling to Forest-Ever Enriching Primary Care 2017; September 2-3; Hong Kong, China.

Lau PS, Lo TW.

Upgrading patient from tube to oral feeding by multidisciplinary team effort. Poster presentation at The Hong Kong College of Family Physicians' 40th Anniversary Conference From Seedling to Forest-Ever Enriching Primary Care 2017; September 2-3; Hong Kong, China.

Rai S, Tang SF, Gurung S.

Prevention and screening cardiovascular disease risk factor among South Asian community in Hong Kong. Poster presentation at The Hong Kong College of Family Physicians' 40th Anniversary Conference From Seedling to Forest-Ever Enriching Primary Care 2017; September 2-3; Hong Kong, China.

Gurung S, Tang SF, Batool A.

Home visit – a proactive health intervention amongst the South Asian's in Hong Kong. Poster presentation at The Hong Kong College of Family Physicians' 40th Anniversary Conference From Seedling to Forest-Ever Enriching Primary Care 2017; September 2-3; Hong Kong, China.

Regencia NGM, Gurung S, Chan LH.

Management of diabetes mellitus by lifestyle modification and support group. Poster presentation at The Hong Kong College of Family Physicians' 40th Anniversary Conference From Seedling to Forest-Ever Enriching Primary Care 2017; September 2-3; Hong Kong, China.

Sharma B, Tang SF, Lau CC, Law TY, Gurung S.

Factors influencing smoking uptake among Nepalese women in Hong Kong. Poster presentation at The Hong Kong College of Family Physicians' 40th Anniversary Conference From Seedling to Forest-Ever Enriching Primary Care 2017; September 2-3; Hong Kong, China.

Sharma B, Tang SF, Lau CC, Law TY, Gurung S.

Motivations to quit smoking among ethnic minorities and Chinese smokers in Hong Kong. Poster presentation at The Hong Kong College of Family Physicians' 40th Anniversary Conference From Seedling to Forest-Ever Enriching Primary Care 2017; September 2-3; Hong Kong, China.

Chung TN, Tang SF, Leung WY.

Travel medicine in a community family medicine clinic. Oral case presentation at The Hong Kong College of Family Physicians' 40th Anniversary Conference From Seedling to Forest-Ever Enriching Primary Care 2017; September 2-3; Hong Kong, China.

Wong TH, Cheung WM, Tang SF.

The effectiveness of home-based intervention on fall prevention as part of home visit programme. Poster presentation at The Hong Kong College of Family Physicians' 40th Anniversary Conference From Seedling to Forest-Ever Enriching Primary Care 2017; September 2-3; Hong Kong, China.

Wong NW, Lee LY, Tang SF.

Effectiveness of interactive interventions for promoting alcohol related harm to primary 5 and 6 students. Poster presentation at The Hong Kong College of Family Physicians' 40th Anniversary Conference From Seedling to Forest-Ever Enriching Primary Care 2017; September 2-3; Hong Kong, China.

Lee LY.

School-based influenza vaccination: parents of secondary school children perspectives. Poster presentation at The Hong Kong College of Family Physicians' 40th Anniversary Conference From Seedling to Forest-Ever Enriching Primary Care 2017; September 2-3; Hong Kong, China.

Ip YL, Fan KY, Tang SF.

Clinical nursing service in primary health care setting. Poster presentation at The Hong Kong College of Family Physicians' 40th Anniversary Conference From Seedling to Forest-Ever Enriching Primary Care 2017; September 2-3; Hong Kong, China.

Sharma B, Tang SF, Lau CC, Ali F, Gurung S.

Preferred first line of pharmacotherapy for smoking cessation amongst ethnic minorities and Chinese in Hong Kong. Poster presentation at "Towards a Tobacco Endgame in Hong Kong" Conference cum 35th Anniversary of Tobacco Control in Hong Kong 2017; December 1; Hong Kong, China.

Gurung S.

Health promotion for ethnic minorities. Oral presentation at Department of Health sharing session 2018; March 6; Hong Kong, China.

基督教聯合醫務協會長期服務及榮休獎

United Christian Medical Service Long Service and Retirement Awards

十年服務獎

10 Years Service Awards

醫生 Doctor

陳洛琳 CHAN Lok Lam
 陳毅冰 CHAN Ngai Ping
 鄭慧芬 CHENG Wai Fun, Anna
 曹永強 CHO Wing Keung
 何駿琳 HO Chun Lam
 郭子迪 KWOK Tsz Tik
 林曉峯 LAM Hiu Fung
 林炎坤 LAM Yim Kwan
 梁智華 LEUNG Chi Wah, Jimmy
 盧慧芝 LO Wai Chee
 彭培輝 PANG Pui Fai
 曾玉萍 TSANG Yuk Ping
 徐瑞娜 TSUI Sui Na
 黃桂榮 WONG Kwai Wing
 于春紅 YU Chun Hung
 容燕櫻 YUNG Yin Ying

護士 Nurse

陳啟釗 CHAN Kai Chiu
 陳錦儀 CHAN Kam Yee
 周靄婷 CHAU Oi Ting
 鄭子健 CHENG Tsz Kin
 趙櫻珊 CHIU Ying Shan, Kitty
 何穎明 HO Wing Ming
 關潔盈 KWAN Kit Ying
 郭文達 KWOK Man Tat
 賴潔鈺 LAI Kit Yuk
 黎婉儀 LAI Yuen Yi
 林詠儀 LAM Wing Yee
 劉海霞 LAU Hoi Ha
 梁淑嫻 LEUNG Shuk Han
 盧小美 LO Siu Mei, Molly
 吳思穎 NG Sze Wing
 潘志亮 PUN Chi Leong
 蕭嘉瑜 SIU Ka Yue
 孫曉碧 SUEN Hiu Pik
 譚俊文 TAM Chun Man
 鄧國玉 TANG Kwok Yuk
 謝詠欣 TSE Wing Yan
 蔡美芳 TSOI Mei Fong
 黃翠珊 WONG Chui Shan
 黃君君 WONG Kwan Kwan
 王懿嘉 WONG Yi Ka
 胡麗珠 WU Lai Chu
 楊明慧 YEUNG Ming Wai, Elina

專職醫療員工 Allied Health Staff

鄭詩意 CHENG Sze Yee
 張維理 CHEUNG Wai Lee
 周宇立 CHOW Yu Lap, Pauly
 梁詠欣 LEUNG Wing Yan
 李廣鴻 LI Kwong Hung
 李樂詩 LI Lok Sze
 劉鎮江 LIU Zhen Jiang
 駱仙恩 LOK Kitty
 石偉龍 SHEK Wai Lung
 黃思豪 WONG Sze Ho
 丘經緯 YAU King Wai
 袁振強 YUEN Chun Keung
 GURUNG Sharmila

一般職級員工 General Grade Staff

陳嘉華 CHAN Ka Wah
 陳麗年 CHAN Lai Nin
 陳佩儀 CHAN Pui Yee
 陳瑞英 CHAN Sui Ying
 陳偉雄 CHAN Wai Hung
 周小紅 CHAU Siu Hung
 鄭菊蘭 CHENG Kuk Lan
 鄭樹蘭 CHENG Shu Lan
 鄭贊銳 CHENG Tsan Yui
 張燕 CHEUNG Yin
 曹文怡 CHO Man Yee
 周雪盈 CHOW Suet Ying
 鄧詠怡 CHOW Wing Yi
 蔡麗雯 CHOY Lai Man
 褚珮茹 CHU Pui Yu, Bronte
 方建江 FONG Kin Kong, Raymond
 何定聰 HO Ting Chung
 何偉清 HO Wai Ching
 何玉琮 HO Yuk King
 許玉妹 HUI Yuk Mui
 官瑞興 KOON Sui Hing
 關素英 KWAN So Ying
 郭文軍 KWOK Man Kwan
 林鈺鴻 LAM Chi Hung
 藍彩潤 LAM Choi Yun
 林冠文 LAM Koon Man
 林秀芬 LAM Sau Fan
 劉伍香 LAU Ng Heung
 劉淑萍 LAU Suk Ping
 劉慧妍 LAU Wai Yin
 羅澤泉 LAW Chak Chuen
 羅澤安 LAW Chak On

李愛琴 LEE Oi Kam
 李愛如 LEE Oi Yu
 李雪珊 LEE Shuet Shan
 李淑英 LEE Suk Ying
 李惠芳 LEE Wai Fong
 李燕霞 LEE Yin Ha, Daisy
 李玉枝 LEE Yuk Chi
 梁建偉 LEUNG Kin Wai
 梁坤珠 LEUNG Kwan Chu
 李靜雯 LI Ching Man
 李瑞英 LI Sui Ying
 盧靜儀 LO Ching Yee
 呂淑霞 LUI Shuk Ha
 陸少惠 LUK Siu Wai
 馬惠環 MA Wai Wan, Cornly
 莫康傑 MOK Hong Kit
 伍月華 NG Yuet Wah, Eva
 顏孔或 NGAN Kong Yu, Friedrich
 冼劍芳 SIN Kim Fong
 譚文洪 TAM Man Hung

鄧羨華 TANG Sin Wah
 曾秀珍 TSANG Sau Chun
 蔡華莉 TSOI Wa Lee
 王翠雯 WONG Chui Man
 黃紅轉 WONG Hung Chuen
 黃金滿 WONG Kam Mun, Frankie
 王潔霞 WONG Kit Ha
 黃文豪 WONG Man Ho
 黃冬蕾 WONG Tung Lui
 黃霞 WONG Ha
 胡蝶兒 WOO Dip Yee
 胡鳳鳴 WOO Fung Ming
 丘玉華 YAU Yuk Wa, Eva
 楊志宏 YEUNG Chi Wang
 楊啟純 YEUNG Kai Shun
 葉致儂 YIP Che Nung
 嚴淑芬 YIM Suk Fun, Gemini
 葉偉嫻 YIP Wai Han
 余秋霞 YU Chau Ha
 朱琳 ZHU Lin

二十年服務獎

20 Years Service Awards

醫生 Doctor

陳志強 CHAN Chi Keung
 鍾健華 CHUNG Kin Wah
 傅兆鳳 FU Siu Fung
 羅建業 LAW Kin Ip
 梁麗娟 LEUNG Lai Kuen
 沈中志 SIM Tiong Chee
 黃能文 WONG Nang Man, Raymond

護士 Nurse

區觀賢 AU Kwun Po
 陳楚汶 CHAN Chor Man
 陳學麟 CHAN Hok Lun
 陳寶茵 CHAN Po Yan
 陳世康 CHAN Sai Hong
 陳淑芬 CHAN Suk Fan
 陳慧珊 CHAN Wai Shan, Phoebe
 陳慧怡 CHAN Wai Yee, Grace
 陳綺雯 CHAN Yee Man, Amanda
 陳燕玲 CHAN Yin Ling
 陳婉儀 CHAN Yuen Yee
 陳彩霞 CHEN Choi Ha, Wendy
 鄭麗儀 CHENG Lai Yee, Sarah
 張嘉雯 CHEUNG Ka Man
 張詠勵 CHEUNG Wing Lai

張燕璇 CHEUNG Yin Shuen
 程淑儀 CHING Suk Yee
 蔡靜宜 CHOI Ching Yee, Ada
 周愛儀 CHOW Oi Yee, Joey
 周玉玲 CHOW Yuk Ling
 何靄儀 HO Oi Yee
 何慧萍 HO Wai Ping
 何慧星 HO Wai Sing
 洪奕龍 HUNG Yik Lung
 郭永衡 KWOK Wing Hang
 黎康明 LAI Hong Ming
 黎美貞 LAI Mei Ching
 黎淑嫻 LAI Shuk Han
 黎穎欣 LAI Wing Yan
 林美娟 LAM Mei Kuen
 林瑞蘭 LAM Sui Lan
 劉雅慧 LAU Nga Wai
 劉惠珊 LAU Wai Shan
 羅玉琮 LAW Yuk King, Bian
 李佩茵 LEE Pui Yan
 李偉舜 LEE Wai Shun
 李燕儀 LEE Yin Yi
 梁翠儀 LEUNG Chui Yee
 梁淑芬 LEUNG Shuk Fun
 梁慧賢 LEUNG Wai Yin
 梁詠雯 LEUNG Wing Man

基督教聯合醫務協會長期服務及榮休獎

United Christian Medical Service Long Service and Retirement Awards

二十年服務獎 20 Years Service Awards

李旻峻 LI Man Chun
李梅英 LI Mui Ying
盧淑儀 LO Suk Yee, Teresa
呂漢華 LUE Hon Wah, Peter
陸靜儀 LUK Ching Yee
馬少芳 MA Siu Fong
萬麗容 MAN Lai Yung
彭佩珊 PANG Pui Shan
譚寶琪 TAM Po Ki
譚偉基 TAM Wai Kei
曾穎 TSANG Wing
謝美玲 TSE Mei Ling
謝綺雯 TSE Yee Man
段自萍 TUEN Chi Ping
黃美玲 WONG Mei Ling
王明溪 WONG Ming Kai
黃雅薇 WONG Nga Mei
黃純鈴 WONG Shun Ling
黃紫祐 WONG Tsz Yau
胡育英 WU Yuk Ying, Gina
邱靜雯 YAU Ching Man
尤惠婷 YAU Wai Ting
葉菁 YIP Ching
姚穎賢 YIU Wing Yin
余佩雯 YU Pui Man

專職醫療員工 Allied Health Staff

陳奕豪 CHAN Yick Ho
趙波 CHIU Po
范穎雅 FAN Wing Nga
何潔梅 HO Kit Mui
李婉君 LEE Yuen Kwan, Winny
彭南杰 PANG Nam Kit
黃妙妍 WONG Miu Yin

一般職級員工 General Grade Staff

陳惠嬌 CHAN Wai Kiu
張瑞玲 CHANG Sui Ling
鄭淑楨 CHENG Shuk Ching
張海嫻 CHEUNG Hoi Han
張麗霞 CHEUNG Lai Ha
張安榮 CHEUNG On Wing
張秀珍 CHEUNG Sau Chun, Wandy
張影珠 CHEUNG Ying Chu
鄧月明 CHOW Yuet Ming, Leah
樊麗芳 FAN Lai Fong
鄺寶儀 KWONG Po Yi, Noel
林民昌 LAM Man Cheung, Paul
劉惠芳 LAU Wai Fong
劉慧雯 LAU Wai Man
李碧蓮 LEE Pik Lin, Katherine
李艷蘭 LEE Yim Lan
梁梅珍 LEUNG Mui Chun, Margaret
魯翠萍 LOO Tsui Ping
馬慧蘭 MA Wai Lan
吳景倫 NG King Lun
顏俊興 NGAN Chun Hing
岑子建 SHAM Tze Kin
冼鳳儀 SIN Fong I
唐廣玲 TONG Kwong Ling
曾思慧 TSANG Sze Wai, Fiona
黃麗卿 WONG Lai Hing
黃文傑 WONG Man Kit, Andy
王漪雅 WONG Yee Nga
胡少雲 WOO Siu Wan
甄素芬 YAN So Fan
邱雲萍 YAU Wan Ping
袁美玲 YUEN Mei Ling
袁玉珊 YUEN Yuk Shan

三十年服務獎 30 Years Service Awards

醫生 Doctor

李克宣 LI Hak Suen

護士 Nurse

區惠卿 AU Wai Hing
陳佩琮 CHAN Pui King
陳婉雯 CHAN Yuen Man
張彩霞 CHEUNG Choi Ha, Monica
朱國慧 CHU Kwok Wai
劉嘉蕙 LAU Ka Wai, Rita
梁鳳玲 LEUNG Fung Ling
梁文慧 LEUNG Man Wai
李楚玲 LI Chor Ling
馬淑良 MA Shuk Leung
莫碧虹 MOK Pik Hung
蕭麗娟 SIU Lai Kuen
謝美琴 TSE Mei Kam, Esther

專職醫療員工 Allied Health Staff

馮德民 FUNG Tak Man
梁麗娟 LEUNG Lai Kuen, Maryann
溫麗芝 WAN Lai Chee

一般職級員工 General Grade Staff

鄭錦明 CHENG Kam Ming
林麗珊 LAM Lai Shan, Catherine
羅少琴 LAW Siu Kam
李麗玲 LI Lai Ling
王鉅邦 WONG Kui Pong
黃守德 WONG Sau Tak
葉安琪 YIP Angel

四十年服務獎 40 Years Service Awards

護士 Nurse

陳艷芬 CHAN Yim Fan
唐淑儀 TONG Suk Yee

基督教聯合醫務協會長期服務及榮休獎

United Christian Medical Service Long Service and Retirement Awards

榮休獎 Retirement

醫生 Doctor

陳志生 CHAN Chi Sang, James
陳衍標 CHAN Hin Biu
何新妮 HO San Ni
李安 LEE On
吳炳榮 NG Ping Wing
胡漢榮 WU Hon Wing, Arthur

護士 Nurse

陳鳳儀 CHAN Fung Yee, Regina
陳艷芬 CHAN Yim Fan
朱淑儀 CHU Suk Yee
何小敏 HO Shiu Man
高紀澄 KO Ki Tsing
劉仲少 LAU Chung Siu
梁少紅 LEUNG Siu Hung
馬懷潔 MA Wai Kit
伍家健 NG Ka Kin, Joseph
敖琮秀 NGO King Sau, Eliza
岑素圓 SHAM So Yuen, Alice
譚淑貞 TAM Suk Ching, Yolanda
鄧志虹 TANG Chi Hung
曾子香 TSANG Tze Heung
曹美齡 TSO May Ling, Connie

專職醫療員工 Allied Health Staff

陳麗虹 CHAN Lai Hung
高漢權 KO Hon Kuen
郭炳權 KWOK Bing Kuen, Kenneth
廖東霞 LIU Tung Ha
魏玉強 NGAI Yuk Keung
湯寶蓮 TONG Po Lin, Shirley
溫麗芝 WAN Lai Chee
胡蓓 WU Pui
葉國霖 YIP Kwok Lam

一般職級員工 General Grade Staff

區文明 AU Man Ming
歐陽小琮 AU YEUNG Siu King
陳朝霞 CHAN Chiu Ha
陳仲雲 CHAN Chung Wan
陳健文 CHAN Kin Man, Edwin
陳林珍 CHAN Lam Chun
陳紹章 CHAN Siu Cheung
陳素娟 CHAN So Kuen
陳詠賢 CHAN Wing Yin
陳玉珠 CHAN Yuk Chee
謝潔容 CHE Kit long
鄭頌好 CHENG Chung Ho
鄭克華 CHENG Hak Wah
鄭錦發 CHENG Kam Fat
鄭健女 CHENG Kin Nui
鄭麗清 CHENG Lai Ching
張金妹 CHEUNG Kam Mui
張安榮 CHEUNG On Wing
張玉清 CHEUNG Yuk Ching
趙文休 CHIU Man Yau
蔡富昌 CHOI Foo Cheong
周鳳鳴 CHOW Fung Ming
周慶樂 CHOW Hing Sun
周秀芳 CHOW Sau Fong
朱秋霞 CHU Chau Har
朱影枚 CHU Ying Mui
鍾國強 CHUNG Kwok Keung
鍾惠如 CHUNG Wai Yu
傅雲開 FU Wan Hoi, Cora
馮繼玲 FUNG Kai Ling
馮美琮 FUNG Mi King
何國偉 HO Kwok Wai
何麗萍 HO Lai Ping
何水平 HO Shui Ping

何玉琮 HO Yuk King
韓細美 HON Sai Mei
許紫菊 HUI Tze Kuk
葉肖琮 IP Chiu King, Stella
簡雲卿 KAN Wan Hing
姜少蘭 KEUNG Siu Lan
姜偉強 KIANG Wai Keung
郭創大 KWOK Chong Tai
郭禮成 KWOK Lai Shing
郭詠思 KWOK Wing Sze
林海珊 LAM Hoi Shan
林帶平 LAM Tai Ping
劉小香 LAU Siu Heung
劉月好 LAU Yuet Ho
羅志雄 LAW Chi Hung
羅振中 LAW Chun Chung
羅培蘭 LAW Pui Lan
李妙玲 LEE Miu Ling
梁嘉偉 LEUNG Ka Wai
梁梅珍 LEUNG Mui Chun, Margaret
梁少琮 LEUNG Siu King
梁瑞敬 LEUNG Sui King
李超娣 LI Chiu Tai
李桂芬 LI Kwai Fun
李光富 LI Kwong Fu
李燕珍 LI Yin Chun
李玉蓮 LI Yuk Lin
勞少玲 LO Siu Ling
李真兒 LY Chan Nhi
麥麗娟 MAK Lai Kuen
吳志成 NG Chi Shing
吳麗夏 NG Lai Har
吳寶華 NG Po Wah
吳佩清 NG Pui Ching
吳錫樑 NG Sik Leung

魏秀雲 NGAI Sau Wan
甯學基 NING Hok Ki
彭惠圓 PANG Wai Yuen
潘杏歡 POON Hang Foon
邵玉華 SHIU Yuk Wah
冼婉貞 SIN Yuen Ching
孫瑞? SUN Sui Chong
鄧婉薇 TANG Yuen Mei
曾芷君 TSANG Chi Kwan
曾志成 TSANG Chi Shing
曾鳳貞 TSANG Fung Ching
曾慶雄 TSANG Hing Hung
曾金嬌 TSANG Kam Kiu
曾偉雄 TSANG Wai Hung
謝蘭馨 TSE Lan Hing
蔡文雄 TSOI Man Hung
黃禮軒 WONG Lai Hin
黃羅華 WONG Law Wah
王愛芳 WONG Oi Fong
王兆華 WONG Siu Wah
黃庭輝 WONG Ting Fai, Laurence
黃映光 WONG Ying Kwong
葉慕貞 YIP Mo Ching

部門主管及經理名錄 (二零一八年三月三十一日) List of Department Heads and Managers (As at 31.3.2018)

院牧部 Chaplaincy

謝耀揚牧師 Rev TSE Yiu Yeung *Hospital Chaplain In-charge*

基督教聯合醫務協會幼兒學校 United Christian Medical Service Nursery School

張仲安 CHEUNG Chung On *Centre-in-charge (from Hong Kong Christian Service)*

基督教聯合那打素社康服務 United Christian Nethersole Community Health Service

管理層 Senior Management

羅澤泉先生	Mr LAW Chak Chuen, Alexander	<i>Executive Director</i>
唐少芬醫生	Dr TANG Shao Fen, Joyce	<i>Medical Director, Preventive Medicine & Clinical Service</i>
歐志強先生	Mr AU Chi Keung	<i>Senior Manager, Operations</i>
陳佩儀女士	Ms CHAN Pui Yee	<i>Senior Manager, Corporate Communications and Public Relations</i>
張漢華先生	Mr CHEUNG Hon Wa	<i>Service Manager, Social Service I</i>
張詠薇女士	Ms CHEUNG Wing Mei, Jenny	<i>Service Manager, Medical and Health</i>
朱賢玲女士	Ms CHU Yin Ling	<i>Senior Manager, Finance and Accounting</i>
劉碧珊女士	Ms LAU Pik Shan	<i>Service Manager, Community Nutrition</i>
李偉正先生	Mr LI Wai Ching, Paul	<i>Director of Pathology Service</i>

醫生 Medical Officers

黎杰芝醫生	Dr LAI Kit Chi	<i>Medical Clinical Co-ordinator</i>
陳慧中醫生	Dr CHAN Wai Chung, Virginia	<i>Medical Officer</i>
陳彥超醫生	Dr CHAN Yin Chiu	<i>Medical Officer</i>
朱勵亞醫生	Dr CHU Lai Ah, Julia	<i>Medical Officer</i>
鍾子能醫生	Dr CHUNG Tze Nang, John	<i>Medical Officer</i>
傅兆鳳醫生	Dr FU Siu Fung	<i>Medical Officer</i>
葉愷翹醫生	Dr IP Hoi Kiu	<i>Medical Officer</i>
顧謙醫生	Dr KOO Him, Thomas	<i>Medical Officer</i>
劉穎思醫生	Dr LAU Wing See	<i>Medical Officer</i>
李秉威醫生	Dr LI Ping Wai	<i>Medical Officer</i>
鄧紹敏醫生	Dr TANG Siu Man, Simon	<i>Medical Officer</i>
溫明成醫生	Dr WAN Ming Shing	<i>Medical Officer</i>
黃鳳儀醫生	Dr WONG Fung Yi	<i>Medical Officer</i>

部門主管及經理名錄 (二零一八年三月三十一日)

List of Department Heads and Managers (As at 31.3.2018)

基督教聯合那打素社康服務 United Christian Nethersole Community Health Service

牙醫 *Dental Officers*

梁麗娟醫生	Dr LEUNG Lai Kuen	<i>Dental Clinical Co-ordinator</i>
區家駒醫生	Dr AU Ka Kui	<i>Dental Officer</i>
陳億康醫生	Dr CHAN Yik Hong	<i>Dental Officer</i>
宗穎超醫生	Dr CHUNG Wing Chiu	<i>Dental Officer</i>
許偉聰醫生	Dr HUI Wai Chung, Leon	<i>Dental Officer</i>
詹麗珊醫生	Dr JIM Lai Shan	<i>Dental Officer</i>
高颺祈醫生	Dr KO Sze Ki	<i>Dental Officer</i>
黎嘉浩醫生	Dr LAI Ka ho, Ivan	<i>Dental Officer</i>
黃麗華醫生	Dr WONG Lai Wah	<i>Dental Officer</i>
黃文敬醫生	Dr WONG Man King	<i>Dental Officer</i>

註冊中醫師 *Registered Chinese Medicine Practitioners*

張杰能博士(註冊中醫)	Dr CHEUNG Kit Nung	<i>Chinese Medicine Practitioner</i>
龐沛博士(註冊中醫)	Dr PONG Pui	<i>Chinese Medicine Practitioner</i>
季霖註冊中醫	Ms KWAI Lam	<i>Chinese Medicine Practitioner</i>
白秉銳註冊中醫	Mr PAK Ping Kwong, Thomas	<i>Chinese Medicine Practitioner</i>
翁靈耀註冊中醫	Mr YUNG Ting Yiu	<i>Chinese Medicine Practitioner</i>
張浪註冊中醫	Mr ZHANG Lang	<i>Chinese Medicine Practitioner</i>
陳俊偉註冊中醫	Mr CHAN Chun Wai	<i>Chinese Medicine Practitioner</i>
陳燕桃註冊中醫	Ms CHAN Yin To	<i>Chinese Medicine Practitioner</i>
張淑君註冊中醫	Ms CHANG Shu Chun	<i>Chinese Medicine Practitioner</i>
巢朝棟註冊中醫	Mr CHAO Chao Dong	<i>Chinese Medicine Practitioner</i>
范紀安註冊中醫	Mr FAN Chih An	<i>Chinese Medicine Practitioner</i>
姜小舟註冊中醫	Ms JIANG Xiaozhou	<i>Chinese Medicine Practitioner</i>
羅健雄註冊中醫	Mr LAW Kin Hung	<i>Chinese Medicine Practitioner</i>
李樂詩註冊中醫	Ms LI Lok Sze	<i>Chinese Medicine Practitioner</i>
凌雅萍註冊中醫	Ms LING Nga Ping	<i>Chinese Medicine Practitioner</i>
吳盈盈註冊中醫	Ms NG Ying Ying	<i>Chinese Medicine Practitioner</i>
徐逸芝註冊中醫	Ms TSUI Yat Chi, Loria	<i>Chinese Medicine Practitioner</i>
屈珮珠註冊中醫	Ms WAT Pui Chu, Carmen	<i>Chinese Medicine Practitioner</i>
王德利註冊中醫	Mr WONG Tak Lee	<i>Chinese Medicine Practitioner</i>
楊碧華註冊中醫	Ms Yeung Pik Wah, Janny	<i>Chinese Medicine Practitioner</i>
楊灌枝註冊中醫	Mr YEUNG Kun Chi	<i>Chinese Medicine Practitioner</i>
葉梓葦註冊中醫	Ms YIP Tsz Wai	<i>Chinese Medicine Practitioner</i>
葉韻姿註冊中醫	Ms YIP Wan Chi, Wandy	<i>Chinese Medicine Practitioner</i>

服務主管 *Heads of Service*

預防醫學及醫療服務 *Preventive Medicine & Clinical Service*

陳曉芬女士	Ms CHAN Hiu Fan, Sibyl	<i>Clinic Manager, Jockey Club Tin Shui Wai Community Health Centre</i>
葉沅莉女士	Ms IP Yuen Lee	<i>Clinic Manager, Kwong Fuk Community Health Centre</i>
古龍沙美娜女士	Ms GURUNG, Sharmila	<i>Service Manager, Ethnic Minority Health Service Unit</i>
李麗茵女士	Ms LEE Lai Yan	<i>Community Nurse Manager, Medical Outreach Service</i>
張維理先生	Mr CHEUNG Wai Lee	<i>Radiology Service Supervisor</i>

部門主管及經理名錄 (二零一八年三月三十一日) List of Department Heads and Managers (As at 31.3.2018)

社會服務 I *Social Service I*

羅敏琪女士	Ms LAW Man Ki	<i>Centre in charge, Integrated Home Care Service</i>
徐詠珊女士	Ms TSUI Wing Shan	<i>Centre in charge, Lei Yue Mun Day Care Centre for the Elderly</i>
嚴淑芬女士	Ms YIM Suk Fun, Gemini	<i>Service Coordinator, Good Neighbour Network Service</i>
趙淑汶女士	Ms CHIU Shuk Man	<i>Service Officer, Good Neighbour Network Service (Tin Shui Wai)</i>
顏芷君女士	Ms NGAN Chi Kwan	<i>Service Officer, Good Neighbour Network Service (Sau Mau Ping)</i>

社會服務 II *Social Service II*

陳潔雯女士	Ms CHAN Kit Man	<i>Service Manager, Social Service II</i>
岑嘉華女士	Ms SUM Ka Wah	<i>Psychological Counsellor</i>

病理化驗服務 *Pathology Laboratory Service*

梁子文先生	Mr LEUNG Tsz Man	<i>Assistant Laboratory Director</i>
鄭淑香女士	Ms CHENG Shuk Heung	<i>Laboratory Manager</i>

社區復康服務 *Community Rehabilitation Service*

鄭家豪先生	Mr CHENG Ka Ho	<i>Service Coordinator, Community Rehabilitation Service</i>
-------	----------------	--

中醫服務 *Chinese Medicine Service*

鄧立志先生	Mr TANG Lap Che	<i>Service Manager, Chinese Medicine</i>
-------	-----------------	--