

ANNUAL REPORT • 年報

2016-2017

*With Christian Love
We Care
With Excellence We Serve*

基督精神 醫護全人



基督教聯合醫務協會
UNITED CHRISTIAN MEDICAL SERVICE



基督教聯合醫院
UNITED CHRISTIAN HOSPITAL



醫院管理局
HOSPITAL
AUTHORITY

- 加強實驗室測試服務，為癌症病人提供額外基因測試，以預防乙型肝炎復發
- 於病房推展中央統籌醫療用品及被服用品補充服務

- Enhance the laboratory testing by providing additional hepatitis B virus DNA tests to cancer patients for prevention of hepatitis B reactivation
- Roll out the central coordinated refill service for medical consumables and linen items in hospital wards

基督教聯合醫務協會

基督教聯合那打素社康服務

基督教聯合那打素社康服務（社康）為基層醫療服務先驅，成立至今 45 載。我們將繼續秉承「健康生活化，生活健康化」的宗旨，為市民大眾提供全面及優質之醫護服務。謹此欣然分享去年成果如下：

- 人口老化帶來之醫療需求不斷上升。承蒙香港賽馬會慈善信託基金贊助，我們繼續為 60 歲或以上人士提供家訪、健康評估及跟進服務。
- 社康轄下之社區健康中心榮獲香港社會企業總會「社企認證」評審系統頒發「SEE Mark」「創越級」社企認證，肯定機構以「社區為本」之優質服務及營運能力。此外，機構更獲勞工及福利局社區投資共享基金頒贈「社會資本動力獎」，以表揚及嘉許機構實踐社會資本精神。
- 社康不斷加強網頁功能及發展社交媒體以提升服務效率。無論透過電腦或智能手機以英文、繁體及簡體字瀏覽機構網站，均能獲取最佳效果。賽馬會和樂社區健康中心、那打素佐敦健康中心及廣福社區健康中心亦新增 WhatsApp 體檢預約服務，給客戶帶來方便及快捷的預約新體驗。
- 那打素中醫服務暨香港中文大學中醫臨床教研中心增設腫瘤專科服務，需求日漸增多。此外，為結合中西醫療及促進公私營醫療合作，我們現正籌劃於基督教聯合醫院內發展一所大規模之綜合專科服務中心，提供多項中醫專科服務（如：腫瘤科、皮膚科、婦科、老人科及痛症科等）、情緒健康教育、社區復康及病理化驗服務，期望能配合基督教聯合醫院重建後迎來之新增服務需求。

United Christian Medical Service

United Christian Nethersole Community Health Service (UCNCHS)

Being a pioneering primary health care provider with 45 years of history, United Christian Nethersole Community Health Service (UCNCHS) continues to advocate the idea of "leading a healthy life" to achieve "holistic health for all". Our achievements during the year were:

- Aging population results in surging demand for medical services. With the unfailing support from The Hong Kong Jockey Club Charities Trust, UCNCHS provided elderly aged 60 or above with home safety assessments, basic health examinations and follow-ups.
- All community health centres were successfully awarded the "Social Enterprise Endorsement Scheme (SEE Mark) - Advanced" by the Council of Hong Kong General Chamber of Social Enterprises Limited, recognizing our operating capacity and community based quality services. Besides, we were awarded the "Social Capital Builder Award by the Community Investment and Inclusion Fund of the Labour and Welfare Bureau for our contribution to the development of social capital in Hong Kong.
- UCNCHS dedicated to bringing more convenient and efficient services to our clients by upgrading our website and social media platform. Clients could browse through our website in English, Traditional and Simplified Chinese characters either by computers or smart phones with best results. Besides, Jockey Club Wo Lok Community Health Centre, UCN Jordan Health Centre and Kwong Fuk Community Health Centre introduced WhatsApp booking for medical check-up service, providing clients with convenient and quick booking experience.
- Since the introduction of Chinese medicine treatment for cancer, the Nethersole Chinese Medicine Service cum The Chinese University of Hong Kong Chinese Medicine Clinical Training and Research Centre has witnessed increasing demand for the service. To integrate Chinese and Western medicines and to enhance public private partnership, we are planning to develop a large-scale comprehensive specialist service centre in the United Christian Hospital premises to provide a number of Chinese medicine specialist services (eg, oncology, dermatology, gynecology, geriatrics and pain management), emotional health education, community rehabilitation and pathology services to cater for the escalating demand in Kowloon East.

二零一六年度基督教聯合醫務協會委員會成員

United Christian Medical Service Committee Membership 2016

院牧事工委員會 Chaplaincy Committee

主席	<i>Chairman</i>
徐贊生主教	Rt Rev TSUI Tsan Sang, Louis
委員	<i>Members</i>
歐陽兆基牧師	Rev AU YEUNG Siu Kei, Tony
方承方牧師	Rev FONG Sing Fong, Abraham
郭志丕主教	Rt Rev Dr Kwok Chi Pei, Timothy
岑禹勤牧師	Rev SHAM Yu Kan
蘇以葆主教	Rt Rev Dr SOO Yee Po, Thomas
王家輝牧師	Rev WONG Ka Fai
翁傳鏗牧師	Rev YUNG Chuen Hung
陳月桂女士	Ms CHAN Yuet Kwai
秘書	<i>Secretary</i>
基督教聯合醫務協會主任院牧	UCMS Chaplain I/C
列席委員	<i>Observers</i>
雅麗氏何妙齡那打素醫院主任院牧	Alice Ho Miu Ling Nethersole Hospital Chaplain I/C
東區尤德夫人那打素醫院主任院牧	Pamela Youde Nethersole Eastern Hospital Chaplain I/C
特邀委員	<i>Co-Opted Members</i>
基督教聯合醫院高級行政經理 (社區協作)	Senior Administrative Manager (Community Partnership), UCH
基督教聯合醫院護士團契代表	Nursing Christian Fellowship Representative, UCH
基督教聯合醫院員工團契代表	Staff Christian Fellowship Representative, UCH
基督教聯合醫院臨床心理學家	Clinical Psychologist (Dept of Psychiatry), UCH
當然董事	<i>Ex-Officio Directors</i>
基督教聯合醫務協會醫務董事	Medical Director, UCMS
基督教聯合醫務協會護理董事	Nursing Director, UCMS
基督教聯合醫務協會行政董事	Administrative Director, UCMS

籌款委員會 Fund-Raising Committee

主席	<i>Chairman</i>
黃婉玲女士	Ms WONG Yuen Ling, Grace
委員	<i>Members</i>
李國謙先生	Mr LI Kwok Heem, John, MH
李澤昆先生	Mr LI Chan Kwan, Marthy
李民滔先生	Mr LI Man Toa, Michael
徐德義醫生	Dr CHUI Tak Yi
湛偉民先生	Mr CHAM Wai Man, Terence
岑素圓女士	Ms SHAM So Yuen, Alice
李志源先生	Mr LEE Chi Yuen, Lawrence
其他委員由主席提議	Other Members to be proposed by the Chairman
秘書	<i>Secretary</i>
張玉清女士	Ms CHEUNG Yuk Ching, Bonnie

投資工作小組 Investment Working Group

召集人	<i>Convenor</i>
陳文寬先生	Mr CHAN Man Foon, Derek
委員	<i>Members</i>
李國謙先生	Mr LI Kwok Heem, John, MH
黃達琪先生	Mr WONG Tat Kee, David
李民滔先生	Mr LI Man Toa, Michael
馮壽松先生	Mr FUNG Sau Chung
周近智先生	Mr CHOW Kun Chee, Roland
湛偉民先生	Mr CHAM Wai Man, Terence
秘書	<i>Secretary</i>
李志源先生	Mr LEE Chi Yuen, Lawrence

基督教聯合那打素社康服務管理委員會

United Christian Nethersole Community Health Service Management Committee

主席	<i>Chairman</i>
李國謙先生	Mr LI Kwok Heem, John, MH
副主席	<i>Vice-Chairman</i>
莫裕生先生*	Mr MOK Yu Sang, Wilson*
委員	<i>Members</i>
周恩慈女士	Ms CHOW Yan Tse, Margot
馮壽松先生	Mr FUNG Sau Chung
曾福全先生	Mr TSANG Fuk Chuen, Thomas
梁萬福醫生	Dr LEUNG Man Fuk, Edward
蒲錦昌牧師	Rev PO Kam Cheong
徐贊生主教	Rt Rev TSUI Tsan Sang, Louis
黃婉玲女士	Ms WONG Yuen Ling, Grace
陳崇一醫生*	Dr CHEN Chung I, Raymond*
周近智律師*	Mr CHOW Kun Chee, Roland*
梁和平先生*	Mr LEUNG Wo Ping, BH, JP*
蕭壽澄長老*	Elder SIU Sau Ching*
陳文寬先生*	Mr CHAN Man Foon, Derek*
梁明涓醫生*	Dr Pamela LEUNG, JP*
李志華先生*	Mr LEE Chee Wah, Roger*
當然委員	<i>Ex-Officio Members</i>
徐德義醫生	Dr CHUI Tak Yi
湛偉民先生	Mr CHAM Wai Man, Terence
岑素圓女士	Ms SHAM So Yuen, Alice
文志賢醫生*	Dr MAN Chi Yin*
馮淑姿女士*	Ms FUNG Shuk Chi, Gigi*
蘇國安先生*	Mr SO Kwok On, Christopher*
秘書	<i>Secretary</i>
基督教聯合那打素社康服務總幹事	Executive Director, UCNCHS
列席委員	<i>Observers</i>
基督教聯合那打素社康服務醫務總監	Medical Director, UCNCHS
基督教聯合那打素社康服務高級經理 (財務及會計)	Senior Manager, Finance & Accounting, UCNCHS

* 由雅麗氏何妙齡那打素慈善基金會董事局提名
Nominated by Alice Ho Miu Ling Nethersole Charity Foundation (AHNCF)

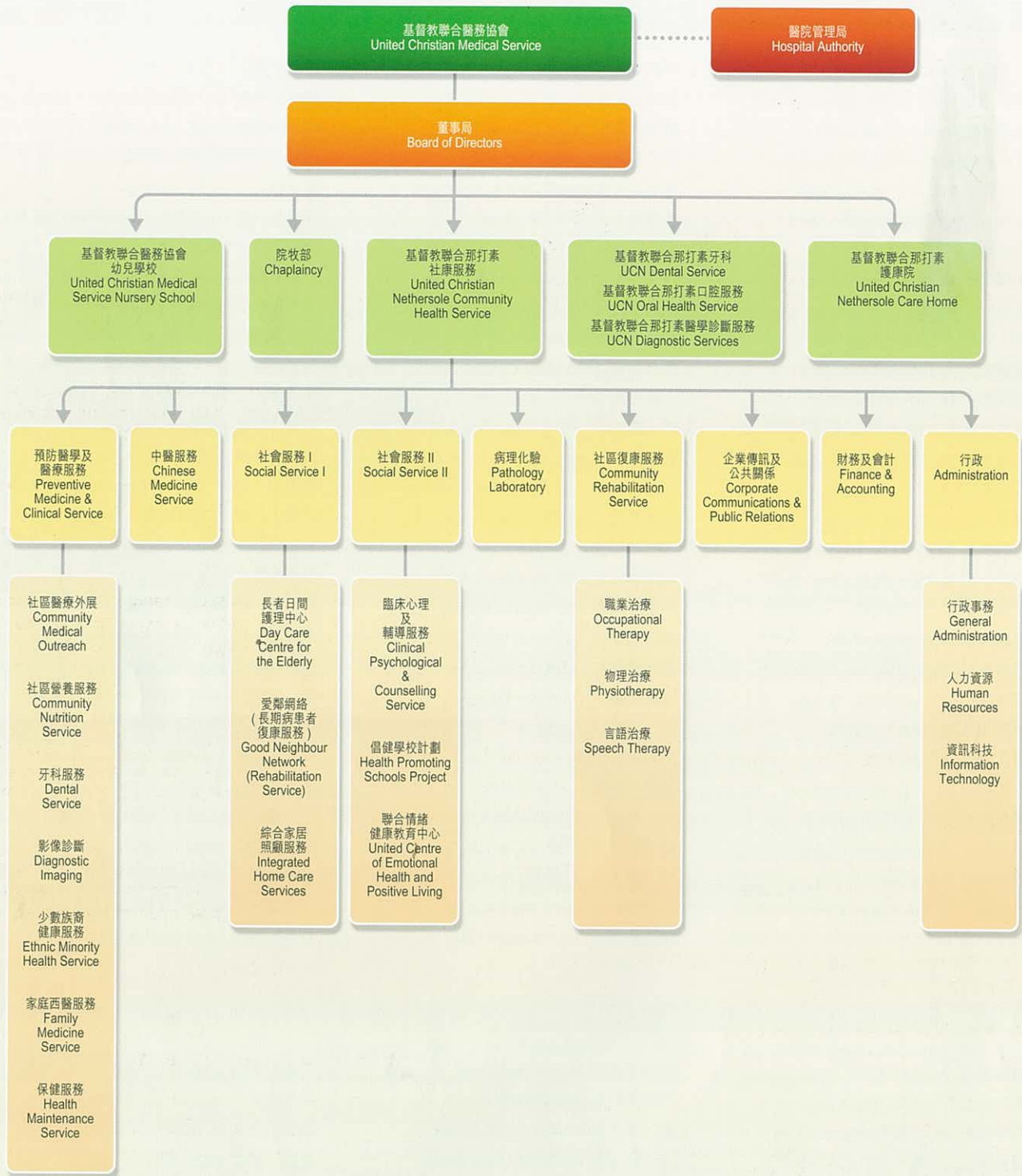
聯合情緒健康教育中心管理委員會

United Centre of Emotional Health and Positive Living Management Committee

主席	<i>Chairman</i>
湯國鈞博士	Dr TONG Kwok Kwun, Anthony
委員	<i>Members</i>
查錫我先生	Mr CHAR Shik Ngor, Stephen
何景亮先生	Mr HO King Leung, Denny
黎樹濠先生	Mr LAI Shu Ho, Patrick, MH, JP
李少鋒先生	Mr LEE Shiu Fung, Brian
黃婉玲女士	Ms WONG Yuen Ling, Grace
蕭麗霞女士	Ms SIU Lai Ha, Stella
游秀慧女士	Ms YAU Sau Wai, Sania
姚家聰醫生	Dr YIU Gar Chung, Michael
羅澤泉先生	Mr LAW Chak Chuen, Alexander
秘書	<i>Secretary</i>
基督教聯合那打素社康服務社會服務部二服務經理	Service Manager, Social Service Division II, UCNCHS

基督教聯合醫務協會組織架構

Organization Chart of United Christian Medical Service



..... 諮詢 Advisory

基督教聯合那打素社康服務 United Christian Nethersole Community Health Service



基督教聯合那打素社康服務
United Christian Nethersole Community Health Service

預防醫學及醫療服務

家庭西醫服務

- 我們於 2016 至 17 年度為 83,791 人次提供服務，當中 29.5% 為 65 歲或以上長者，同時有 9,795 人次受惠於長期病患跟進服務。
- 服務使用者對預防性服務的需求殷切，特別是疫苗注射、女士保健服務、基層和二級預防醫療服務。
- 我們設於九龍東及新界東的診所參與由醫院管理局推行的「普通科門診公私營協作計劃」，提供慢性疾病診治和護理服務。
- 配合政府於 2016 年 9 月推行「大腸癌篩查先導計劃」，我們轄下各西醫診所合共為 521 人次提供篩查服務。

牙科服務

- 我們轄下之六間牙科診所，由九位牙科醫生為市民提供基本牙科、植牙、矯齒等服務。2016 至 17 年度的服務總人次為 23,537。
- 我們繼續參與「關愛基金長者牙科服務資助項目」，並計劃於本年內翻新部份牙科診所及設備，提升服務質素。

社區醫療外展

- 為減少社區傳染病的爆發，我們於 2016 至 17 年度為接近 35,000 名地區人士注射預防流感疫苗。此外，亦為 300 人次注射人類乳頭瘤病毒 HPV 疫苗。
- 我們關注社區人士之健康，於本年度為地區團體、學校及私營機構舉行了 21 場健康講座。
- 我們的「至 Fit 員工健康檢查」計劃自推出至今反應理想，總服務人次於本年度超過 630。
- 我們獲得「瑞銀基金」的贊助，於本年度推出「Every Child Counts」計劃推廣，成功舉行了 27 場健康教育講座，合共 802 名中、小學學生和 24 位老師參加，其中 667 名學生亦接受了免費流感疫苗注射，計劃反應令人鼓舞。

Preventive Medicine & Clinical Service

Family Medicine Service

- Our clinics recorded a total patient attendance of 83,791 in the 2016-17 year, 29.5% of whom were elderly aged 65 or above. And a total patient attendance of 9,795 was recorded for the chronic disease follow-up services.
- Client demanded for preventive care remained high, especially vaccination, well-woman clinic and primary and secondary prevention which was an indicator of community health need.
- Our clinics in Kowloon East and New Territories East took part in the "General Outpatient Clinic Public-Private Partnership Program" launched by the Hospital Authority, providing chronic disease management.
- In line with the Government's implementation of the "Colorectal Cancer Screening Pilot Scheme" in September 2016, our clinics provided a total of 521 screening services.

Dental Service

- Staffed by nine dental service officers, our six dental clinics providing services such as general dentistry, implant and orthodontics. The total service attendance reached 23,537 in the year 2016-17.
- We continued to participate in the Community Care Fund Elderly Dental Assistance Program and were planning to renovate part of the dental clinics and equipment to enhance service quality.

Community Medical Outreach

- To prevent disease outbreaks, nearly 35,000 doses of quadrivalent influenza vaccines were offered to the general public on outreach basis along with nearly 300 HPV injections in the year 2016-17.
- As we cared about the health development of the public, we launched 21 educational talks for various community organizations, schools and companies during the year.
- Positive responses were received for the "Fit & Smart" on-site mini-health check program, resulting in a service attendance of over 630 this year.
- With the sponsorship from UBS Optimus Foundation, we organized "Every Child Counts" health promotion program successfully. A total of 27 health education seminars with 802 secondary and primary school students and 24 teachers participated in the program. 667 students also received free influenza vaccination. The overall response was positive.

基督教聯合那打素社康服務

United Christian Nethersole Community Health Service

保健服務

- 於 2016 至 17 年度參加成人保健計劃之 18 歲或以上人士共 11,627 人次；另外，參與「香港賽馬會資助計劃 - 社區長者保健計劃」的 60 歲或以上人士多達 6,719 人次。
- 我們探訪了 855 名 65 歲或以上的地區獨居長者，評估他們的家居安全，並提供簡單健康檢查和教育服務。



家訪獨居長者
Home visit the lived alone elderly

- 我們連續第六年參加由運輸署資助協辦的「商用車輛司機健康檢查計劃」為 1,722 位商用車輛的司機提供健康檢查。

社區營養服務

- 我們於 2016 至 17 年度繼續獲得香港公益金的部分資助，為市民提供各種優質營養服務。註冊營養師團隊於四所社區健康中心合共為 4,095 人次提供個別飲食輔導服務，主要針對體重管理及三高（與血糖、血脂及血壓高）的相關飲食問題。我們的網上預約平台於本年度為約 300 名新症預約營養諮詢服務，手續簡易快捷，方便工時不穩定的人士可隨時進行預約。
- 承蒙 Kuenflower Management Inc. (以鄺錫坤及鄺許美娟名義) 捐款予瑞銀慈善基金會撥款資助，我們於 2016 年 9 月推行《活出幼「營」改「膳」健康計劃》為 5 所特殊幼兒中心提供一個較全面的營養健康護理。計劃包括為學童健康篩查及家長會面；為較高風險患上營養不良之學童提供個別飲食輔導，並向家長提供餐膳建議及改良方法、舉辦家長和同工互動工作坊，直接受惠人次達 544 人，成效評估結果顯示參加者之知識、態度及行為均達預期指標。
- 我們為學校、團體及公司舉辦共 49 場社區營養計劃及教育營養專題講座，受惠人次達 2,531。我們亦於機構的 Facebook 專頁刊登「週三營貼士」，定期提供富趣味性及與生活時事相關的營養教育。

Health Maintenance Service

- In the year 2016-17, our adult health maintenance program recorded an attendance of 11,627 adults aged 18 or above. Besides, an attendance of 6,719 elderly aged 60 or above joined the "Hong Kong Jockey Club Community Project Grant: Community Geriatric Health Maintenance Program".
- We paid 855 home visits to singletons aged 65 or above, providing home safety assessments, basic health examinations and education.
- For the sixth consecutive year, we joined the Transport Department's "Commercial Vehicle Drive Health Check Program", offering health check-ups for 1,722 commercial vehicle drivers.

Community Nutrition Service

- Partially supported by the Community Chest in the 2016-17 year, we continued to provide the general public with a variety of quality nutrition services. The individual diet counseling service provided by our team of registered dietitians reached a total attendance of 4,095 and dietary advice in relation to weight management and "three highs" (high blood glucose, hyperlipidemia and hypertension) was offered. Besides, about 300 new service users registered through our online pre-registration platform for dietitians' appointment, which streamlined the booking process for service users with irregular working hours.
- Thanks to the generous donation from Kuenflower Management Inc. (in honour of Kwong Sik Kwan and Kwong Hui May Kuen) to the UBS Optimus Foundation, the "Every Child Counts" project was successfully launched in September, 2016. A total of 5 special needs agencies received a comprehensive nutrition care service including nutrition screening for children; individual diet counseling with parents/caretakers, parents workshop and staff training. The direct beneficiaries reached 544 and the overall outcome was more than satisfactory.
- We held 49 talks for schools, agencies and companies and provided community nutrition education, altogether reaching a total attendance of 2,531. We also launched "Wednesday Nutrition Tips" on the UCN Facebook page as an interesting nutrition education section.



註冊營養師舉行教師培訓小組
Registered dietitian organized teacher training group

基督教聯合那打素社康服務 United Christian Nethersole Community Health Service

影像診斷部

- 我們於 2016 至 17 年度期間為 27,867 人次提供服務，當中 24,078 人次接受普通 X 光檢查，1,388 人次接受超聲波掃描檢查、1,791 人次接受雙能量 X 光骨質密度檢查及 610 人次接受乳腺 X 光造影檢查。
- 我們繼續於佐敦健康中心及賽馬會天水圍社區健康中心提供雙能量 X 光骨質密度檢查優惠予地區人士，賽馬會天水圍社區健康中心更與博愛醫院及屯門醫院合作，為病患者提供雙能量 X 光骨質密度檢查、乳腺 X 光造影及部份超聲波掃描檢查之優惠。

病理化驗服務團隊

- 我們是由一隊專業的化驗人員組成，配備先進儀器，為不同的專科醫生提供多種病理測試，幫助他們作出準確及快速之診斷。
- 我們團隊堅守專業精神，務求為病人提供全面性、貼身及相宜的病理診斷服務，並於 2016 至 17 年間完成 37,583 人次的化驗服務。



化驗師提供專業化驗服務
Professional laboratory services by technologists

社區復康服務

- 我們的專業團隊由經驗豐富的物理治療師、職業治療師及言語治療師組成。
- 我們於 2016 至 17 年度繼續為各區之不同長者服務機構提供優質復康治療服務，包括社區防跌計劃、長者離院支援計劃。我們亦正拓展為特殊教育需要兒童而設的職業治療服務。
- 我們於觀塘區和大埔區的社區健康中心提供一系列適切的物理治療服務，包括關節檢查、頸椎和腰椎牽引、干擾電流治療、超聲波治療、冷熱療法、手法舒整治療、針灸穴位療法、復康運動和跌倒風險評估等。
- 我們於本年度共提供 646 次家訪、607 節機構治療服務、41 次訓練課程及 1,083 節個別物理治療服務，2016 至 17 年度之服務人次達 7,250。

Diagnostic Imaging Service

- Our total service attendance reached 27,867 in the 2016-17 year with 24,078 receiving general X-ray, 1,388 ultrasonic examinations, 1,791 DEXA and 610 mammography.
- Jordan Health Centre and Jockey Club Tin Shui Wai Community Health Centre continued to offer discount on DEXA examinations. Besides, Jockey Club Tin Shui Wai Community Health Centre partnered with Pok Oi Hospital and Tuen Mun Hospital to offer patients with discount on DEXA examinations, mammography and some ultrasound examinations.

Pathology Laboratory

- With state-of-the-art equipment, UCN Pathology Laboratory adopts a multidisciplinary approach and offers a wide range of pathology testing services to help different medical specialists make prompt and accurate diagnosis.
- We aim to provide comprehensive, personalized and affordable laboratory service to patients. A total of 37,583 cases were received in the 2016-17 year.

Community Rehabilitation Service

- Experienced Physiotherapists, Occupational Therapists and Speech Therapist made up our professional team.
- Quality rehabilitation services were provided for a variety of elderly service organizations in the community in the 2016-17 year, including Fall Prevention Programs and Integrated Discharge Support Programs. We were also developing center-based occupational therapy for children with Special Education Needs (SEN).
- We offered a host of timely physiotherapy services for the community health centres in Kwun Tong and Tai Po, including body joint check-ups, cervical and lumbar traction, interferential therapy, ultrasound therapy, cold-and-hot therapy, manual therapy, acupuncture, rehabilitation exercises and fall risk assessments.
- We provided 646 home visits, 607 institution treatment sessions, 41 training courses and 1,083 sessions of physiotherapy treatment this year. The total service attendance was 7,250 in the 2016-17 year.

基督教聯合那打素社康服務

United Christian Nethersole Community Health Service

健康教育及推廣

踢「酒」智多 FUN！ — 預防兒童濫酒計劃

- 承蒙健康護理及促進基金之贊助，我們已成功舉辦 7 場小學生酒精健康教育講座及 9 場家長與學生工作坊，共 1,442 名本地小學生和 124 位家長受惠。問卷調查結果顯示，超過八成學生及家長參與計劃後對酒精相關知識有所增長，另有八成以上參加者表示，若將來有朋輩邀請他們喝酒，他們有信心可以拒絕誘惑。



小學生於健康教育講座表現踴躍
Primary students responding well during a health talk

Health Education and Promotion

“Alcohol Has to Go” — Alcohol Harm Reduction Program

- Sponsored by the Health Care and Promotion Fund a total of 7 health talks and 9 workshops had been conducted satisfactorily for 1,442 local primary school students and 124 parents. Results of a questionnaire indicated that over 80% of the students and parents enhanced their knowledge on alcohol-related issues after participating in the program, and more than 80% of the students were confident about rejecting peer invitations to alcohol consumption.



「預防大腸癌妙法，你做左未呀？」 — 大腸癌預防計劃

- 為提高公眾對大腸癌的關注，我們舉辦了為期 18 個月的大腸癌預防計劃。活動於 2016 年 10 月結束，我們已舉行 38 場預防大腸癌健康教育工作坊，共 1,278 名 50 歲或以上人士受惠，其中 502 名人士接受個別諮詢和風險評估。問卷調查結果顯示，超過六成參加者參與計劃後對大腸癌預防和篩查相關知識有所提升，四成以上人士更表示有意向家庭醫生諮詢大腸癌篩查。



機構代表分享腸道健康知識
A UCN representative sharing health knowledge on colorectal health

Colorectal Cancer Prevention Program

- The 18-month program aiming to raise public awareness on colorectal cancer ended in October 2016. A total of 38 workshops were held, reaching 1,278 people aged 50 or above. Survey showed that over 60% of the participants knew more about colorectal cancer prevention and screening after joining the program, while more than 40% intended to consult their family doctor about the screening.



少數族裔健康服務

- 南亞裔健康支援計劃 (公益金資助)
 - 我們與 41 間機構 (包括非牟利組織、學校、宗教組織、醫院) 合作共同舉辦健康推廣活動。於 2016 至 17 年度為少數族裔提供了 12,753 次健康檢查，包括量度血壓、血糖、膽固醇及身體脂肪百分比及子宮頸癌和貧血檢查。

Ethnic Minority Health Service

- South Asian Health Support Program (Funded by Community Chest)
 - With the support from 41 organizations (NGOs, schools, religious bodies, hospitals), we provided 12,753 health screenings (including measurements of blood pressure, blood sugar, cholesterol and body fat percentage as well as cervical cancer and anemia screenings) with the aim to prevent and manage chronic diseases.

基督教聯合那打素社康服務 United Christian Nethersole Community Health Service

- 我們舉辦 69 場健康講座，出席人次為 2,408。此外，我們更進行了 155 次家訪，宣傳健康生活及兒童家居安全。
- 108 人登記成為義工，提供 2,243 小時服務。
- 我們於社區派發 8,000 份以不同語言寫成的季刊，並革新我們的網站 www.ucn-emhealth.org，透過連結至衛生署網站，方便大學生在這網上平台尋找實習機會。



教授婦女做健體運動
Women doing fitness exercise

- We also held 69 health talks with an attendance of 2,408, 155 home visits were conducted to promote healthy lifestyle and child safety at home.
- 108 people registered as volunteers, providing 2,243 service hours.
- 8,000 copies of quarterly newsletters in multiple languages were distributed in the community. Besides, we revamped our website www.ucn-emhealth.org to make it more user-friendly. The website was linked to that of the Hong Kong Department of Health, through which the university students could easily look for internship opportunities.



男士健康活動推廣
Men health promotion

● 少數族裔及新移民戒煙服務 (衛生署控煙辦公室資助)

- 我們於 2016 至 17 年度共舉辦 22 場健康講座，吸引 637 人參與，其中 76% 人士表示於活動後加強戒煙知識。此外，我們舉辦 14 場大型展覽活動，吸引 3,340 人參與。
- 外展團隊透過 96 次戒煙宣傳活動成功吸引 1,564 人次參與，當中 418 人為吸煙人士，220 位吸煙人士更接受戒煙服務診治。
- 我們向立法會提交 3 項建議書提倡香港煙草控制措施。



於天水圍社區推廣少數族裔及新移民戒煙計劃
"Smoking Cessation" outreach service at Tin Shui Wai

● Smoking Cessation Program for Ethnic Minorities and New Immigrants (Funded by Tobacco Control Officer, Department of Health)

- In the 2016-17 year, we completed a series of smoking cessation promotion events including 22 health talks with a total attendance of 637 (of which 76% of them had enhanced knowledge of ongoing smoking) and 14 large-scale events with an attendance of 3,340.
- Also, 96 outreach sessions on promoting smoking cessation were organized, drawing an attendance of 1,564 of which 418 were current smokers. Consequently, 220 current smokers were referred to our clinics and received quit smoking treatment.
- 3 submissions were made to the legislative council to advocate for tobacco control measures in Hong Kong.



「世界無煙日」2017 推廣活動
"World No Tobacco Day 2017" promotion campaign

基督教聯合那打素社康服務 United Christian Nethersole Community Health Service

報告發表

- 少數族裔健康服務代表於 2017 年 2 月出席由香港中文大學未來城市研究所都市歷史、文化與媒體研究中心舉辦的「想像未來：亞洲的社區創新和社會韌性」，發表了一份學術報告，主要研究影響少數民族健康的因素。
- 少數族裔健康服務代表亦於 2017 年 3 月出席由香港大學家庭醫學及基層醫療學系舉辦的「家庭醫學和初級保健研究研討會：實施品質初級保健」發表兩份學術報告，範疇包括研究少數族裔及新移民戒煙計劃之行為及根據少數族裔的治療方式之戒煙比率。

健康講座及健康推廣活動

- 各部門共舉辦了 587 場健康講座，吸引多達 35,516 人次參與。另有 33,431 人次參與我們舉辦的 1,004 場健康工作坊 / 課程。
- 機構於 2016 年 5 月 10 日參與由香港社會服務聯會主辦的「商界關懷社區伙伴合作展 2016」，我們與友盟建築材料有限公司、美國輝瑞科研製藥有限公司、亨達集團、生機源（香港）有限公司及愛普生香港有限公司合作，透過舉辦不同的社區活動、捐助及資助員工接受健康檢查服務等，攜手實踐企業社會責任。
- 機構獲邀參與運輸署於 2016 年 11 月 9 日舉行的「至 Fit 安全駕駛大行動」打氣大會，向商用車司機及大眾宣揚健康資訊，並擺放講解骨骼健康、體重管理及健康飲食等資訊的展板。



機構代表接受運輸署頒發之紀念狀
A UCN representative receiving a certificate

- 機構與時並進，我們於賽馬會和樂社區健康中心及基督教聯合那打素佐敦健康中心增設 WhatsApp 體檢查詢及預約服務，為客戶帶來更方便快捷的服務。

Presentations

- In February 2017, representatives of Ethnic Minority Health Service attended the International Conference on Imaging the Future Community Innovation and Social Resilience in Asia organized by Centre of Urban History, Culture and Media, under Institute of Future Cities (IOFC) of The Chinese University of Hong Kong (CUHK) giving a presentation on topic of "Factors affecting Health of Ethnic Minorities in Hong Kong".
- In March 2017, representatives of Ethnic Minority Health Service attended the Primary Care Research Symposium 2017 – Implementing Quality in Primary Care organized by Department of Family Medicine and Primary Care, The University of Hong Kong on topics of "Smoking behaviour among different ethnic groups in Hong Kong" and "Smoking Abstinence Rate according to Treatment Modality for Ethnic Minorities".

Health Talks and Health Promotion Activities

- All divisions altogether conducted 587 health talks that reached a total attendance of 35,516 while our 1,004 health workshops / classes drew an attendance of 33,431.
- To put corporate social responsibility into practice, UCN collaborated with Alliance Construction Materials Limited, Pfizer Corporation Hong Kong Limited, Hantec Pacific Limited, BioCycle (Hong Kong) Limited and Epson Hong Kong Limited in the 2016 -17 year to host activities, make donations, subsidize health check-ups for staff and provide staff with talks, workshops and so on.



機構代表與商界展關懷社區伙伴之代表合照
Photo taken with one of the caring company representative

- We were invited by the Transport Department to share health information at a ceremony of the "Safe Driving and Health Campaign for Commercial Vehicle Drivers" on 9 November, 2016 with commercial vehicle drivers and participants. During the event, exhibition panels on bone health, weight management and a healthy diet were also set up to promote healthy living.
- WhatsApp service was launched for enquiry and booking for health check-up services at UCN Jordan Health Centre & Jockey Club Wo Lok Community Health Centre.

基督教聯合那打素社康服務 United Christian Nethersole Community Health Service

中醫服務

- 8個中醫服務點(大埔、秀茂坪、富亨、和樂、廣福、天水圍、彩頤及鄭德炎日間復康護理中心)分別提供內科、針灸、骨傷推拿、中醫專病和穴位敷貼門診服務,兼有中草藥或中藥顆粒沖劑、代煎中草藥及中醫保健養生計劃。
- 我們於2016至17年度診症服務人次為123,432。中醫健康諮詢及中醫講座服務人次為4,704。
- 那打素中醫服務暨香港中文大學中醫臨床教研中心為醫院管理局中醫科研計劃試點之一,與香港中文大學合作進行「針刺聯合穴位敷貼治療鼻敏感(過敏性鼻炎症狀)臨床研究計劃」,以測試針刺聯合穴位敷貼治療過敏性鼻炎的療效,為治療鼻敏感提供一個行之有效的方案。
- 那打素中醫服務暨香港中文大學中醫臨床教研中心更於2016年4月開始新增特別診療服務(腫瘤),此項服務需求殷切,服務人次多達1,672。



講座中介紹穴位按壓之位置
Demonstration of acupressure during health talk

社會服務

綜合家居照顧服務

- 為了實踐「居家安老」及「持續照顧」的理念,使服務受眾能在社區中健康和快樂地生活,我們提供多元化之家庭照顧服務予大埔區內60歲或以上的體弱長者、殘疾人士及需要社區支援的家庭。服務包括膳食服務、個人護理、健康護理、護送、簡單運動、家務協助及購物等,於2016至17年度服務共27,283人次。
- 除基本服務外,我們提供了一連串的增值服務,受惠之服務使用者達223人次。服務包括由蘋果日報慈善基金贊助之「節日加飯餸」活動、雅麗氏何妙齡那打素醫院膳食部贊助保溫杯、盈愛行動贊助音樂會門票及月曆等;另由本單位主辦之「服務內容知多點」聚焦小組、「羅星拱照迎新春」新春旅行及「院聞其詳」戶外活動;並與香港婦女中心協會賽馬會太和中心、香港聖公會救主堂社會服務中心賽馬會家庭幹線、公益青年服務團、中華傳道會恩光堂及中華基督教會廣福堂分別舉行「節日探訪」活動,讓服務使用者得到適切的照顧和關懷。

Chinese Medicine Service

- Our eight Chinese medicine service units (Tai Po, Sau Mau Ping, Fu Heng, Wo Lok, Kwong Fuk, Tin Shui Wai, Cheerful Court and Cheng Tak Yim Day Rehabilitation and Care Centre) provided general consultation covering internal medicine, acupuncture, bone-setting / tui-na, Chinese medicine specialty and body point adhesive-plaster, supplemented with herb or granule dispensary, decoction, Chinese medicine health nurturing scheme.
- In the year 2016-17, the total service attendance of our consultation services as well as our free Chinese medicine health consultations and seminars were 123,432 and 4,704 respectively.
- Being one of the partners of the Hospital Authority Chinese medicine research program, Nethersole Chinese Medicine Service cum The Chinese University of Hong Kong Chinese Medicine Clinical Training and Research Centre collaborated with the Chinese University of Hong Kong to study the clinical efficacy of acupuncture and herbal moxibustion for the treatment of allergic rhinitis symptoms.
- The Nethersole Chinese Medicine Service cum The Chinese University of Hong Kong Chinese Medicine Clinical Training and Research Centre also set up a Specialist Chinese Medicine service for Tumor in April 2016. The demand was great, with a total service attendance of 1,672.

Social Service

Integrated Home Care Services

- Our team aims at actualizing the concepts of "Ageing in Place" and "Continuum of Care" such that those who received our services can stay healthy and live happily in the community. We provide a wide spectrum of community support services to the physically frail elderly aged 60 or above, people with disabilities and needy families in Tai Po. Our services include meal provision, personal care, simple nursing care, escort, general physical exercises, general domestic duties, purchase and delivery of daily necessities, etc. Service attendance reached 27,283 in the 2016-17 year.



獨居長者收取特色膳食及水果後笑容滿臉
Singleton elderly was happy to receive special meals and fruit

基督教聯合那打素社康服務 United Christian Nethersole Community Health Service

愛鄰網絡

- 於 2016 至 17 年度，承蒙觀塘區議會 - 健康屋邨計劃、老有所為活動計劃及友盟建築材料有限公司贊助，我們先後舉辦「動手、動口齊抗糖」、「同心同行樂活族」、「豐盛回憶·傳頌愛與希望」、「多才多藝創新意」及「友盟友鄰聖誕歡聚」計劃，透過興趣小組、戶外旅行、參觀、家居探訪、節慶活動、嘉年華及健康主題活動等，為超過 1,735 人次提供服務，讓長期病患者互相認識，建立支援網絡，一同積極面對人生。



參加花展活動同享美好時光
Enjoyed wonderful time in visiting the flower show

- 我們獲得不少機構、私人企業及社區人士慷慨捐助，包括現金、節日禮物包、月餅、食品、衣物、日用品、節日手作飾物、棉被、復康器材用品、玩具及樂園入場券，超過 2,500 人次受惠。我們亦聯同非牟利機構、義工團體、教會及專上院校等探訪超過 2,241 人次，為獨居及有需要的長期病患者送上關懷。



會員參加編織小組
Members participated in the handmade scarf together



暢遊迪欣湖及製餅工場
Visit to Inspiration Lake and cake workshop

- Apart from the basic services, our team provided value-added services, reaching 223 beneficiaries in total including “Festive Dishes” events sponsored by Apple Daily Charitable Foundation; insulation cups donated by the AHNH Meal Services; concert tickets and calendars sponsored by the Mission of Love. We also organized focus group, outdoor activities including a one-day tour and elderly home visiting. In addition, we collaborated with Hong Kong Federation of Women’s Centres Jockey Club Tai Wo Centre, Hong Kong Sheng Kung Hui The Church of Our Saviour Social Service Centre, CYC Senior Members Service Group, CNEC Grace Light Chapel and Church of Christ in China Kwong Fuk Church for the “Festival Home Visit” Program. All these served to provide proper care for the service users.

Good Neighbour Network

- Funded by Kwun Tong District Council – Kwun Tong Health City Project, Opportunities for the Elderly Project 2016-17 and Alliance Construction Materials Limited, we organized a series of programs including “Fight for Diabetes Together”, “Living with Versatility and Creativity”, “Concentric Peers” and “Joyful Christmas Together”. A service attendance of 1,735 was recorded for various activities such as interest groups, outdoor activities, visits, home visits, festive celebrations, carnival, and activities on health. These programs served as an avenue for the chronically ill to make friends, so that they could build up a positive lifestyle and broaden their social support networking.
- Meanwhile, we received considerable donations from various agencies, private corporations and members of the community in the form of cash, festive gift bags, mooncakes, food, clothes, daily necessities, hand-made accessories, quilts, rehabilitation aids, toys and free Disney tickets, reaching over 2,500 beneficiaries. With the support from non-government organizations, volunteer agencies, churches and tertiary institutions, we made over 2,241 home visits to singletons or chronic illness patients in need and make them feel cared for.

基督教聯合那打素社康服務 United Christian Nethersole Community Health Service

鯉魚門長者日間護理中心

- 中心致力為觀塘區內 60 歲或以上患有長期病患、行動不便或自理能力較低的長者提供適切的日間護理服務，包括護理、膳食、復康訓練、治療小組、社交及康樂活動、接載服務及護老者支援等。我們於 2016 至 17 年度為 84 名長者提供 11,267 次日間照顧。
- 除了身體需要外，中心亦考慮到長者在社交及心靈方面的需要，與油塘宣道會合作，每季舉辦一系列福音活動，讓更多長者認識主耶穌。我們於節日舉辦節慶活動、旅行活動及新春遊花市。此外，中心透過舉辦雙親節慶祝活動，邀請會員和家屬一同參與，藉此向家中的父母 / 長者表達感謝和讚賞，同時舉辦硬地滾球班、繪畫班及歌詠小組班等興趣班，讓長者發揮所長，增加自信和生趣。



中心與會員一同創作聖誕卡
Our members designed their Christmas card to celebrate Christmas

- 我們的活動獲不同機構的支持，如亨達集團贊助的「關懷十五載齊心創未來」周年慶典，讓會員一同感受中心成立十五周年的歡樂氣氛，並向長者傳揚愛的訊息。我們於 2016 至 17 年度獲不同義工團體支持，包括香港科技大學、觀塘民聯會、基督教家庭服務中心青年樂隊及保良局方王錦全幼稚園等，讓他們透過義工活動向會員表達關懷和愛心，送上各式各樣精采的節目，豐富長者在中心的生活，並拉近了兩代關係，促進長幼共融。

Lei Yue Mun Day Care Centre for the Elderly

- We serve elderly aged 60 or above in Kwun Tong district who suffer from chronic illness, low mobility or a lack of self-care ability. We provide relevant daycare services based on the needs of our service recipients, including nursing care, meal service, rehabilitation exercise, treatment groups, social and recreational activities, escort service and career support. In the 2016-17 year, we served 84 elderly members and recorded a service attendance of 11,267.
- In addition to physical needs, we care for the social and spiritual needs of the elderly. To help members know Lord Jesus, we partnered with the Christian and Missionary Alliance Yau Tong Church to provide them with a series of evangelical activities. We also organized festive events, outings and Flower Market Tour. Through organizing the Parents' Day celebration, family members were invited to participate to express gratitude to their parents / elders. Bocchia, painting classes and singing classes were held as well to enrich the aging life of the elderly.
- Generous sponsorships were also received from caring companies such as Hantec Pacific Limited, who sponsored the "15th Anniversary Celebration Event". Our members enjoyed the celebration atmosphere and love from the volunteers through the activity. In the 2016-17 year, we received support from various volunteer groups, including The Hong Kong University of Science and Technology, Kwun Tong Resident Association, CFSC Youth Music Team, Po Leung Kuk Mrs Fong Wong Kam Chuen Kindergarten and so on. They shared love and joy with the elderly through volunteer work which enriched the social life of the elderly. Their visits also promoted and enhanced the integration of youth and elderly.



中心會員學習水墨畫增添治情
Our members learnt ink painting for relaxation

聯合情緒健康教育中心

- 我們致力為大眾及專業人士提供全面服務，包括心理輔導、臨床心理服務、特殊學習需要兒童評估、治療小組和正向心理學講座及工作坊，亦請來海外及本地專業人士 / 學者主持專業工作坊，講解各種心理治療和介入手法。
- 我們以支援受情緒困擾之人士為己任，協助他們處理情緒問題和面對人生各階段的挑戰。我們的心理輔導員為個人、夫婦及家庭提供適切的輔導服務；而臨床心理學家除了提供成人心理治療外，亦為有特殊學習需要之兒童提供智力評估和一般兒童情緒輔導。

United Centre of Emotional Health & Positive Living

- Our centre is dedicated to providing the general public and professionals with comprehensive services, including psychological counseling and clinical psychological services, assessment of special educational needs (SEN), treatment groups as well as positive psychology workshops and talks. We also provide professional training workshops conducted by local and overseas trainers, covering different psychotherapies and intervention techniques. It has always been our hope to serve those facing emotional distress so as to help them deal with emotional problems and difficult moments in different stages of life.

基督教聯合那打素社康服務

United Christian Nethersole Community Health Service

- 應用正向心理學於生活之中是中心的理念。中心的正向心理學專業培訓包括講座及工作坊，廣受大專院校、慈善團體、中小學和私營機構歡迎，於2016至17年度共舉辦了88場相關活動。
- 承蒙 Robyn D. Walser 博士應邀來港為中心進行為期三天的「接納與承諾療法」進階工作坊，我們成功招募約 100 名本地專業人士參與。此外，我們亦請來兩位本地資深導師講解各種心理治療模式、介入手法及臨床技巧。四場工作坊吸引了超過 220 名專業人士參加，包括臨床心理學家、醫護人員、輔助醫療人員、社福界和教育界專業人士，並獲得正面迴響。
- 我們的倡健學校計劃致力提倡全人健康的概念，為本港中小學提供有關身心健康的教育活動。我們於 2016 至 17 年度為 27 間小學及 14 間中學的學生、教職員及家長提供服務，總服務人次為 19,124。
- 有賴基督教聯合醫務協會、雅麗氏何妙齡那打素慈善基金會、觀塘區議會觀塘健康城市督導委員會及永明基金的贊助，我們於年內舉辦一系列多元化的健康教育活動，重點活動包括「全方位身心健康」計劃，以講座、小組、全方位身心健康貼示年曆咭等形式，讓參加者更深入了解何謂平衡身心健康的生活模式，並予以實踐機會，促進兒童及青少年的全人健康發展。



觀塘區議會觀塘健康城市督導委員會贊助的「全方位身心健康」計劃
Project funded by the Kwun Tong Healthy City Steering Committee of Kwun Tong District Council

- Our psychological counsellors offer psychological counselling services for individuals, couples and families. Our clinical psychologists offer adult psychotherapy, plus assessments and emotion counselling for children with special educational needs.



專業培訓工作坊
Professional training workshop by Dr Robyn D. Walser

- Applying positive psychology into daily life is our principal rationale. The signature professional training workshops and talks on positive psychology were welcomed by tertiary institutions, charity organizations, schools and private sectors, with 88 sessions held during the 2016-17 year.
- We were honored to have Dr Robyn D. Walser conducted a 3-day advanced training workshop on Acceptance and Commitment Therapy (ACT) for us. Around 100 professionals attended this workshop with positive feedback. Besides, two local trainers held professional training workshops on various psychotherapies, psychological approaches and intervention skills. The four workshops were attended by more than 220 professionals representing the fields of clinical psychology, medicine, allied health, social welfare and education. Overall, positive feedback was received.
- Our Health Promoting Schools Project aims at promoting holistic health to primary and secondary schools in Hong Kong through holding activities with a focus on physical and mental health. We provided services to 27 primary schools and 14 secondary schools in the 2016-17 year, benefitting an attendance of 19,124 students, staff and parents.
- With empathic support from United Christian Medical Service, Alice Ho Miu Ling Nethersole Charity Foundation, the Kwun Tong Healthy City Steering Committee of Kwun Tong District Council and Wing Ming Foundation, we launched various educational programs in the 2016-17 year including “全方位身心健康計劃”. To promote holistic health development, we held talks, group activities and printed 2017 calendar with mental and physical health tips, through which children and youth understood more about physical and mental health.

基督教聯合那打素社康服務

United Christian Nethersole Community Health Service

2016 至 17 年度服務數字統計
Service Statistics in 2016-17

服務人次
No. of Service Attendance

預防醫學及醫療服務 Preventive Medicine & Clinical Service

家庭西醫服務 Family Medicine Service	83,791
牙科服務 Dental Service	23,537
社區醫療外展 Community Medical Outreach	37,964
社區營養服務 Community Nutrition Service	6,721
成人保健服務 Adult Health Maintenance Service	11,627
老人保健服務 Geriatric Health Maintenance Service	8,697
影像診斷 Diagnostic Imaging Service	27,867
南亞裔健康支援計劃 South Asian Health Support Program	22,157
少數族裔及新移民戒煙計劃 Smoking Cessation Program for Ethnic Minorities and New Immigrants	4,208
醫學口譯培訓 Medical Interpretation Training course	147

病理化驗 Pathology Laboratory

病理化驗服務 Pathology Laboratory Service	37,583
-------------------------------------	--------

社區復康服務 Community Rehabilitation Service

社區復康服務 Community Rehabilitation Service	7,250
---	-------

中醫服務 Chinese Medicine Service

內科 Internal Medicine	67,180
針灸 Acupuncture	48,628
天灸 Tianjiu	4,648
骨傷推拿 Bone-setting / Tui-na	1,304
中醫講座及中醫問診 Chinese Medicine Seminar and Consultation	4,704
專科 Specialty	1,672

社會服務 I Social Service I

長者日間護理中心 Day Care Centre for the Elderly	12,552
綜合家居照顧服務 Integrated Home Care Services	27,506
愛鄰網絡 Good Neighbour Network	91,764

社會服務 II (聯合情緒健康教育中心) Social Service II (United Centre of Emotional Health & Positive Living)

講座 / 工作坊 / 專業培訓 Talks/ Workshops/ Professional Training	2,731
倡健學校計劃 Health Promoting Schools Project	19,124
臨床心理治療 Psychological Treatment	506.5 (小時 / Hours)

健康推廣活動 Health Promotional Activities

傳媒 Mass Media	705 (篇 / Articles)
義工服務 Volunteer Service	20,320 (小時 / Hours)
學生實習機會 Student Placement Opportunities	73

* 服務人次指包括相關講座、小組及課程、展覽及活動之服務出席者總數。

No. of Service Attendance means the total number of attendees at our services including talks, groups and classes as well as exhibitions and events.

基督教聯合醫務協會長期服務及榮休獎

United Christian Medical Service Long Service and Retirement Awards

十年服務獎

10 Years Service Awards

醫生 Doctor

陳開澤 CHAN Hoi Chak
 陳麗華 CHAN Lai Wah, Connie
 陳佩慧 CHAN Pui Wai
 陳曉群 CHEN Xiaoqun
 蔡穎怡 CHOI Wing Yee, Regina
 馮寶姿 FUNG Po Gee, Genevieve
 甘振聲 KUM Chun Sing
 賴廣麟 LAI Kwong Lun
 劉日明 LAU Yat Ming
 羅卓珊 LAW Cheuk San
 羅小琼 LAW Siu Sing
 梁加琳 LEUNG Ka Lam
 林惠新 LIM Huey Sing
 沈君豪 SHAM Kwan Ho
 曾明霖 TSANG Ming Lam
 曹育強 TSO Yuk Keung, Eugene

護士 Nurse

陳燕玲 CHAN Yin Ling
 鄭家強 CHENG Ka Keung
 張浩維 CHEUNG Ho Wai
 張國基 CHEUNG Kwok Kee
 朱恆枝 CHU Hang Chi
 詹文健 JIM Man Kin
 黎惠林 LAI Wai Chu
 林金治 LAM Kam Chi
 劉志昕 LAU Chi Yan
 劉國禧 LAU Kwok Hei
 李少青 LEE Siu Ching, Gloria
 梁惠萍 LEUNG Wai Ping, Winifred
 李立軍 LI Lap Kwan
 盧穎恒 LO Wing Hang
 雷詠雯 LUI Wing Man
 馬婉儀 MA Lusiana
 吳景華 NG King Wah
 吳穎華 NG Weng Wa
 彭佩雲 PAN Pui Wan
 彭傲梅 PANG Ngo Mui
 王智豪 WONG Chi Ho
 黃思莉 WONG Sze Lee

專職醫療員工 Allied Health Staff

陳國柱 CHAN Kwok Chu
 陳紫敏 CHAN Tze Man
 湛秀賢 CHARM Sau Yin
 江嘉偉 KONG Ka Wai
 古志芬 KOO Chi Fan
 羅敏琪 LAW Man Ki
 白佩雯 PAK Pui Man
 龐沛 PONG Pui
 黃凱珊 WONG Hoi Shan, Mary

一般職級員工 General Grade Staff

陳娟春 CHAN Kuen Chun
 陳桂珍 CHAN Kwai Chun
 陳淑芬 CHAN Suk Fan, Candy
 鄭玉卿 CHIANG Iok Heng
 朱玉英 CHU Yuk Ying
 鍾慶弟 CHUNG Hing Tai
 何志明 HO Chi Ming
 關翠美 KWAN Chui Mei
 郭大純 KWOK Tai Shun, Dodo
 黎惠敏 LAI Wai Man
 林敏妮 LAM Man Ni
 林碧霞 LAM Pik Ha
 劉永群 LAU Wing Kwan
 李祥木 LEE Cheung Muk
 李少顏 LEE Siu Ngan
 李穎心 LEE Wing Sum
 梁笑梅 LEUNG Siu Mui
 呂秀芹 LUI Sau Kan
 雷純敏 LUI Shun Man
 雷慧清 LUI, Wai Ching
 吳淑華 NG Shuk wa, Kannie
 石笑芳 SHEK Siu Fong
 岑沛珊 SHUM Pui Shan
 岑澤權 SUM Chak Kuen
 鄧劍薇 TANG Kim Mei
 溫麗娟 WAN Lai Kuen
 溫美蓮 WAN Mei Lin
 王潔蓮 WONG Kit Lin
 王嫻玲 WONG Man Ling
 楊海銀 YEUNG Hoi Ngan

二十年服務獎

20 Years Service Awards

醫生 Doctor

陳衍標 CHAN Hin Biu
 趙華強 CHIU Wa Keung
 馮思遠 FUNG Sze Yuen, Frederick
 吳奇峰 GO Ki Fung
 何祐邦 HO Yau Bong, Winsom
 甘爾惠 KAM Yee Wai, Grace
 李嘉麗 LEE Ka Lai, Clar
 李家龍 LEE Kar Lung
 梁敏之 LEUNG Man Chi
 吳漢華 NG Hon Wah
 蘇慶成 SO Hing Shing

護士 Nurse

陳靜嫻 CHAN Ching Han, Grac
 陳煦寧 CHAN Hui Ling
 陳勤勤 CHAN Kan Kan
 陳潔雅 CHAN Kit Nga
 陳良珠 CHAN Leung Chu
 陳淑清 CHAN Suk Ching
 周麗芬 CHAU Lai Fan
 秦敏儀 CHEN Man Yee, Mand
 鄭麗麗 CHENG Lai Lai
 張麗芬 CHEUNG Lai Fan
 張德芝 CHEUNG Tak Chi
 張惠敏 CHEUNG Wai Man, Mand
 戚美琪 CHI Mei Ki
 蔡勵思 CHOI Lai Sze
 蔡美玉 CHOI Mei Yuk
 鍾麗章 CHUNG Lai Cheung
 方君嫻 FONG Kwan Mei, Eilee
 符秋元 FU Chau Yuen
 馮寶珊 FUNG Po Shan
 何穎欣 HO Wing Yan
 何婉玲 HO Yuen Ling, Eric
 姜彥文 KEUNG Yin Man
 郭亞真 KWOK Ah Chun
 郭石森 KWOK Shek Sum
 黎芷筠 LAI Chi Kwan
 黎群娣 LAI Kwan Tai
 林曉洁 LAM Hiu Kit
 林淑芳 LAM Shuk Fong
 林淑麗 LAM Shuk Lai
 劉洁 LAU Kit
 劉銀杏 LAU Ngan Hang
 劉秀花 LAU Sau Fa
 劉益萍 LAU Yick Ping

羅湘蘭 LAW Sheung Lan, Winnie
 羅永雄 LAW Wing Hung
 李嘉敏 LEE Ka Man
 李家儀 LEE Ka Yee, Carmen
 李啟源 LEE Kai Yuen
 李淑芬 LEE Suk Fan
 梁慧玲 LEUNG Wai Ling
 李家慧 LI Kai Wai, Karen
 李美然 LI Mei Yan, May
 李善康 LI Sin Hong
 廖成光 LIU Shing Kwong
 廖惠琴 LIU Wai Kam
 龍子荊 LOON Tsz King
 雷潔瑩 LUI Kit Ying
 吳國樑 NG Kwok Leung
 吳嫻珠 NG Sim Chu
 顏巧蘭 NGAN Hau Lan
 敖琼秀 NGO King Sau, Eliza
 潘寶萍 PAN Po Ping
 潘志江 POON Chi Kong
 潘佩琪 POON Pui Kei
 潘德輝 POON Tak Fai, William
 岑碧華 SHUM Pik Wa
 戴少梅 TAI Siu Mui
 譚嘉鳳 TAM Ka Fung
 談沛芝 TAM Pui Chi
 譚永祥 TAM Wing Cheung
 唐佩蓮 TONG Pui Lin
 曾滿前 TSANG Mun Chin, Kenny
 曾淑儀 TSANG Suk Yee
 曾慧玉 TSANG Wai Yuk
 曾婉婷 TSANG Yuen Ting
 謝卓英 TSE Cheuk Ying
 謝劍韻 TSE Kim Wan
 謝瑞芳 TSE Sui Fong, Lowell
 徐愛玉 TSUI Oi Yuk
 弘雅芳 WANG Nga Fong
 黃振坤 WONG Chun Kwan
 王芳 WONG Fong
 黃鳳美 WONG Fung Mei
 黃麗娜 WONG Lai No, Rena
 黃碧君 WONG Pik Kwan, Gillian
 黃寶君 WONG Po Kwan
 黃斯敏 WONG Shee Man, Hilda
 黃信美 WONG Shun Mi
 黃永勝 WONG Wing Sing
 游碧琪 YAU Pi Ki

基督教聯合醫務協會長期服務及榮休獎 United Christian Medical Service Long Service and Retirement Awards

二十年服務獎 20 Years Service Awards

邱穎嫻 YAU Wing Yan
姚敏思 YIU Man Sze, Janic
余忠諱 YU Chung Tsang, Mic
阮寶鸞 YUEN Po Luen
翁皓晶 YUNG Ho Ching

專職醫療員工 Allied Health Staff

陳志榮 CHAN Chi Wing
陳潔明 CHAN Kit Ming, Christella
周翠碧 CHOU Chui Pik, Pegg
朱蕙儀 CHU Wai Yee
馮鈞耀 FUNG Kwan Yiu
羅玉雄 LAW Yuk Hung, Ellis
李少康 LEE Siu Hong
梁樹輝 LEUNG Shu Fai
吳佩玲 NG Pui Ling
曾佩宜 TSANG Pui Yee
溫月嫦 WAN Yuet Sheung
黃秀琼 WONG Sau King
胡華文 WU Wah Man, Terrence
楊佩儀 YEUNG Pui Yee
楊兆恩 YEUNG Shiu Yan

一般職級員工 General Grade Staff

陳志佳 CHAN Chi Kai
陳劍鋒 CHAN Kim Fung
陳麗虹 CHAN Lai Hung
陳麗玲 CHAN Lai Ling
陳敏儀 CHAN Man Yee
陳淑儀 CHAN Shok Yee, Helen
陳大昕 CHAN Tai Yan
陳慧萍 CHAN Wai Ping
陳榮輝 CHAN Wing Fai, Chris
陳玉燕 CHAN Yuk Yin
周潔芳 CHAU Kit Fong
周麗嫻 CHAU Lai Sim
周美玉 CHAU Mai Yuk
鄭建全 CHENG Kin Chuen
張美雲 CHEUNG Mei Wan
張淑珍 CHEUNG Suk Chun
張慧芬 CHEUNG Wai Fan
張月娟 CHEUNG Yuet Kuen
詹莉珊 CHIM Lee Shan
蔡鳳儀 CHOI Fung Yee
朱海燕 CHU Hoi Yin
朱嘉茵 CHU Ka Yan
馮繼玲 FUNG Kai Ling

馮美玉 FUNG Mei Yuk
馮偉生 FUNG Wai Sang, Herman
何家傑 HO Ka Kit
何麗萍 HO Lai Ping
何美鳳 HO Mei Fung
何美卿 HO Mei Hing
何偉坤 HO Wai Kwan, Shirl
許月琴 HUI Yuet Kam
高紅 KO Hung
江麗娟 KONG Lai Kuen
關碧儀 KWAN Pik Yee
郭詠茵 KWOK Wing Yan
黎俊文 LAI Sam William
林文亮 LAM Man Leung
林明娟 LAM Ming Kuen
林偉玲 LAM Wai Ling
劉小香 LAU Siu Heung
劉玉芳 LAU Yuk Fong
羅沛芝 LAW Pui Chi, Samantha
李全新 LEE Chuen Sun
李美嬌 LEE Mei Kiu
李雪芬 LEE Suet Fan
梁素雲 LEUNG So Wan
李笑卿 LI Siu Hing
李玉蓮 LI Yuk Lin
羅鳳玲 LO Fung Ling
勞麗紅 LO Lai Hung
盧雪寶 LO Suet Po
盧艷娟 LO Yim Kuen
陸佩珍 LUK Pui Chun
馬佩芬 MA Pui Fan
馬新雄 MA Sun Hung
莫玉群 MOK Yuk Kwan
柯佩儀 OR Pui Yee
岑佩儀 SAM Pui yee
沈慧珍 SHAM Wai chun
石慧燕 SHEK Wai yin
蕭麗芬 SIU Lai fun
蕭小紅 SIU Siu hung
譚慧玲 TAM Wai ling
鄧智德 TANG Chi Tak
陶玲玲 TAO Ling Ling
曾鳳貞 TSANG Fung Ching
曾耀榮 TSANG Yiu Wing
童培磊 TUNG Pui Lui
黃展鵬 WONG Chin Pang
黃富成 WONG Fu Shing
黃秀卿 WONG Sau Hing

黃庭輝 WONG Ting Fai, Laurenc
胡玉娟 WU Yuk Kuen
葉振權 YIP Chun Kuen
葉鏡明 YIP Keng Ming
鄒少儀 ZHOU Shao Yi

三十年服務獎 30 Years Service Awards

醫生 Doctor

吳炳榮 NG Ping Wing
胡漢榮 WU Hon Wing, Arthur

護士 Nurse

陳合心 CHAN Hop Sum
陳金鳳 CHAN Kam Fung
陳愛和 CHAN Oi Wo
陳榮慶 CHAN Wing Hing
朱燕珍 CHU Yin Chun
鍾秀娟 CHUNG Sau Kuen, Queenie
許福慶 HUI Fuk Hing
葉麗嫦 IP Lai Sheung
祁文峰 KI Man Fung
劉佩雯 LAU Pui Man
梁秀芬 LEUNG Sau Fan
雷偉剛 LUI Wai Kong
顏佩玲 NGAN Pui Ling
謝麗蘭 TSE Lai Lan
黃兆賢 WONG Shui Yin
易詠琴 YICK Wing Kam

專職醫療員工 Allied Health Staff

朱建城 CHU Kin Sing
潘偉卓 POON Wai Cheuk

一般職級員工 General Grade Staff

鄭慧娟 CHANG Wai Kuen
譚鉅源 TAM Kui Yuen
黃潤璇 WONG Yun Shuen

四十年服務獎 40 Years Service Awards

護士 Nurse

李倩明 LEE Sin Ming
馬懷潔 MA Wai Kit
麥麗嫦 MAK Lai Sheung

基督教聯合醫務協會長期服務及榮休獎

United Christian Medical Service Long Service and Retirement Awards

榮休獎 Retirement

醫生 Doctor

鄭仲傑 CHENG Chung Kit, James
霍慧涓 FOK Wei Guen, Gwen
盧承迅 LO Shing Shun
魏 星 NGAI, Sing

陳群歡 CHAN Kwan Foon
陳麗玲 CHAN Lai Ling
陳琳娘 CHAN Lam Neung
陳樂區 CHAN Lok Kui
陳敏儀 CHAN Man Yee
陳 華 CHAN Wah

羅志強 LAW Chi Keung
李翠萍 LEE Tsui Ping
梁治強 LEUNG Chi Keung
梁占元 LEUNG Jim Yuen
梁燕玲 LEUNG Yin Ling
李錦鴻 LI Kam Hung

黃秀清 WONG Sau Ching
黃笑美 WONG Siu Mei
黃淑娟 WONG Suk Kuen
王達榮 WONG Tat Wing
黃丁仕 WONG Ting Shi
王偉賢 WONG Wai Yin

護士 Nurse

陳淑清 CHAN Suk Ching
陳玉芬 CHAN Yuk Fan
周奇英 CHOW Ki Ying
許楚君 HUI Cho Kwan
郭恩愛 KWOK Yan Oi
李倩明 LEE Sin Ming
李妙蘭 LEE Miu Lan
李幼環 LI Yau Wan, Cissy
麥麗嫦 MAK Lai Sheung
唐淑儀 TONG Suk Yee
曾滿前 TSANG Mun Chin, Kenny

陳溢強 CHAN Yat Keung
陳月娟 CHAN Yuet Kuen
鄭秀屏 CHENG Sau Ping
鄭玉清 CHENG Yuk Ching
張月娟 CHEUNG Yuet Kuen
張玉燕 CHEUNG Yuk Yin
程淑明 CHING Suk Ming
周國興 CHOW Kwok Hing
方耀冬 FONG Yiu Tung
方月娣 FONG Yuet Tai
馮蔡慧蘭 FUNG CHOI Wai Lan, Anna
馮鶴山 FUNG Hook San
馮月華 FUNG Yuet Wah
馮玉玲 FUNG Yuk Ling

李 強 LI Keung
李笑卿 LI Siu Hing
李榮超 LI Wing Chiu
李業盈 LI Yip Ying
勞麗紅 LO Lai Hung
盧少薇 LO Siu Mei
羅偉芬 LO Wai Fan
雷麗嫻 LUI Lai Sim
呂碧珍 LUI Pik Chun
雷寶珊 LUI Po Shan
陸佩珍 LUK Pui Chun
麥逢生 MAK Fung Sang
麥美愛 MAK Mi Oi

黃綺媚 WONG Yee Mei
黃玉和 WONG Yuk Wo
黃 容 WONG Yung
黃玉霞 WONG Yuk Har
胡蝶兒 WOO Dip Yee
胡美玲 WU Mei Ling
胡淑霞 WU Suk Har, Teresa
胡玉娟 WU Yuk Kuen
余秋鳳 YU Chau Fung
袁美玲 YUEN Mei Ling

專職醫療員工 Allied Health Staff

陳志偉 CHAN Chi Wai
馮慶生 FUNG Hing Sang
潘喜瑟 POON Hei Sut
楊秋玲 YEUNG Chau Ling

何霞琴 HO Har Kam
何惠玲 HO Wai Ling
何婉嫦 HO Yuen Seung
韓秀蓮 HON Sau Lin, Winnie
葉鳳娟 IP Fung Kuen
高彩霞 KO Choi Ha
郭美莉 KWOK Mei Lee
黎見齊 LAI Kin Chai
黎俊文 LAI Sam William
林淑霞 LAM Suk Ha
劉美珠 LAU Mei Chu
劉瑞龍 LAU Sui Lung
劉影珍 LAU Ying Chun

吳淑群 NG Shuk Kwan
伍秀琼 NG Sau King
余秀玲 SHE Sau Ling
孫美芳 SUEN Mei Fong
蘇惠珍 SO Wai Chun, Cind
譚鉅源 TAM Kui Yuen
鄧志歡 TANG Chi Foon
鄧焦妹 TANG Chiu Mui
曾金鈴 TSANG Kam Ling
曾耀榮 TSANG Yiu Wing
黃志光 WONG Chi Kwong, Benjami
黃展鵬 WONG Chin Pang
王振春 WONG Chun Chun
黃麗儀 WONG Lai Yee

一般職級員工 General Grade Staff

區麗萍 AU Lai Ping
陳濟民 CHAN Chai Man, Eric
陳 貞 CHAN Ching
陳金連 CHAN Kam Lin
陳錦華 CHAN Kam Wah

部門主管及經理名錄 (二零一七年三月三十一日) List of Department Heads and Managers (As at 31.3.2017)

院牧部 Chaplaincy

謝耀揚牧師 Rev TSE Yiu Yeung Hospital Chaplain In-charge

基督教聯合醫務協會幼兒學校 United Christian Medical Service Nursery School

張仲安 CHEUNG Chung On Centre-in-charge (from Hong Kong Christian Service)

基督教聯合那打素護康院 United Christian Nethersole Care Home

蘇國安 SO Kwok On, Christopher Chief Executive Officer of Alice Ho Miu Ling Nethersole Charity Foundation
林愛蘭 LAM Oi Lan, Irene Professional Consultant cum Superintendent of United Christian Nethersole Care Home

基督教聯合那打素社康服務 United Christian Nethersole Community Health Service

管理層 Senior Management

羅澤泉先生 Mr LAW Chak Chuen, Alexander Executive Director
唐少芬醫生 Dr TANG Shao Fen, Joyce Medical Director, Preventive Medicine & Clinical Service
歐志強先生 Mr AU Chi Keung Senior Manager, Operations
陳佩儀女士 Ms CHAN Pui Yee Senior Manager, Corporate Communications and Public Relations
張漢華先生 Mr CHEUNG Hon Wa Service Manager, Social Service I
張詠薇女士 Ms CHEUNG Wing Mei, Jenny Service Manager, Medical and Health
朱賢玲女士 Ms CHU Yin Ling Senior Manager, Finance and Accounting
劉碧珊女士 Ms LAU Pik Shan Service Manager, Community Nutrition
李偉正先生 Mr LI Wai Ching, Paul Director of Pathology Service

醫生 Medical Officers

黎杰芝醫生 Dr LAI Kit Chi Medical Clinical Co-ordinator
陳慧中醫生 Dr CHAN Wai Chung, Virginia Medical Officer
陳彥超醫生 Dr CHAN Yin Chiu Medical Officer
朱勵亞醫生 Dr CHU Lai Ah, Julia Medical Officer
徐慧美醫生 Dr CHUI Wai May, Amy Medical Officer
鍾子能醫生 Dr CHUNG Tze Nang, John Medical Officer
傅兆鳳醫生 Dr FU Siu Fung Medical Officer
顧謙醫生 Dr KOO Him, Thomas Medical Officer
劉穎思醫生 Dr LAU Wing See Medical Officer
李碧球醫生 Dr LEE Big Kau, Judy Medical Officer
梁繼邦醫生 Dr LEUNG Kai Bond Medical Officer
李秉威醫生 Dr LI Ping Wai Medical Officer
鄧紹敏醫生 Dr TANG Siu Man, Simon Medical Officer
溫明成醫生 Dr WAN Ming Shing Medical Officer
黃鳳儀醫生 Dr WONG Fung Yi Medical Officer

部門主管及經理名錄 (二零一七年三月三十一日)

List of Department Heads and Managers (As at 31.3.2017)

基督教聯合那打素社康服務 United Christian Nethersole Community Health Service

牙醫 *Dental Officers*

梁麗娟醫生	Dr LEUNG Lai Kuen	<i>Dental Clinical Co-ordinator</i>
宗穎超醫生	Dr CHUNG Wing Chiu	<i>Dental Officer</i>
朱迪熙醫生	Dr CHU Ryan Julian Dick Hei	<i>Dental Officer</i>
詹麗珊醫生	Dr JIM Lai Shan	<i>Dental Officer</i>
高颯祈醫生	Dr KO Sze Ki	<i>Dental Officer</i>
黎嘉浩醫生	Dr LAI Ka ho, Ivan	<i>Dental Officer</i>
曾文龍醫生	Dr TSANG Man Lung	<i>Dental Officer</i>
黃麗華醫生	Dr WONG Lai Wah	<i>Dental Officer</i>
黃文敬醫生	Dr WONG Man King	<i>Dental Officer</i>

註冊中醫師 *Registered Chinese Medicine Practitioners*

張杰能博士(註冊中醫)	Dr CHEUNG Kit Nung	<i>Chinese Medicine Practitioner</i>
龐沛博士(註冊中醫)	Dr PONG Pui	<i>Chinese Medicine Practitioner</i>
季霖註冊中醫	Ms KWAI Lam	<i>Chinese Medicine Practitioner</i>
陳俊偉註冊中醫	Mr CHAN Chun Wai	<i>Chinese Medicine Practitioner</i>
張淑君註冊中醫	Ms CHANG Shu Chun	<i>Chinese Medicine Practitioner</i>
姜小舟註冊中醫	Ms JIANG Xiaozhou	<i>Chinese Medicine Practitioner</i>
許佩娟註冊中醫	Ms KHOR Mooi Kia	<i>Chinese Medicine Practitioner</i>
劉善宏註冊中醫	Mr LAU Sin Wan	<i>Chinese Medicine Practitioner</i>
羅健雄註冊中醫	Mr LAW Kin Hung	<i>Chinese Medicine Practitioner</i>
李樂詩註冊中醫	Ms LI Lok Sze	<i>Chinese Medicine Practitioner</i>
凌雅萍註冊中醫	Ms LING Nga Ping	<i>Chinese Medicine Practitioner</i>
吳盈盈註冊中醫	Ms NG Ying Ying	<i>Chinese Medicine Practitioner</i>
白秉銳註冊中醫	Mr PAK Ping Kwong, Thomas	<i>Chinese Medicine Practitioner</i>
徐逸芝註冊中醫	Ms TSUI Yat Chi, Loria	<i>Chinese Medicine Practitioner</i>
屈珮珠註冊中醫	Ms WAT Pui Chu, Carmen	<i>Chinese Medicine Practitioner</i>
王德利註冊中醫	Mr WONG Tak Lee	<i>Chinese Medicine Practitioner</i>
楊碧華註冊中醫	Ms Yeung Pik Wah, Janny	<i>Chinese Medicine Practitioner</i>
葉梓葦註冊中醫	Ms YIP Tsz Wai	<i>Chinese Medicine Practitioner</i>
葉韻姿註冊中醫	Ms YIP Wan Chi, Wandy	<i>Chinese Medicine Practitioner</i>
翁霆耀註冊中醫	Mr YUNG Ting Yiu	<i>Chinese Medicine Practitioner</i>

服務主管 *Heads of Service*

預防醫學及醫療服務 *Preventive Medicine & Clinical Service*

陳曉芬女士	Ms CHAN Hiu Fan, Sibyl	<i>Clinic Manager, Jockey Club Tin Shui Wai Community Health Centre</i>
葉沅莉女士	Ms IP Yuen Lee	<i>Clinic Manager, Kwong Fuk Community Health Centre</i>
梁穎愉女士	Ms LEUNG Wing Yu, Jessie	<i>Clinic Manager, UCN Jordan Health Centre</i>
古龍沙美娜女士	Ms GURUNG, Sharmila	<i>Service Manager, Ethnic Minority Health Service Unit</i>
李麗茵女士	Ms LEE Lai Yan	<i>Community Nurse Manager, Medical Outreach Service</i>
張維理先生	Mr CHEUNG Wai Lee	<i>Radiology Service Supervisor</i>

部門主管及經理名錄 (二零一七年三月三十一日) List of Department Heads and Managers (As at 31.3.2017)

社會服務 I Social Service I

羅敏琪女士	Ms LAW Man Ki	Centre in Charge, Integrated Home Care Service
徐詠珊女士	Ms TSUI Wing Shan	Centre in charge, Lei Yue Mun Day Care Centre for the Elderly
嚴淑芬女士	Ms YIM Suk Fun, Gemini	Service Coordinator, Good Neighbour Network Service
趙淑汶女士	Ms CHIU Shuk Man	Service Officer, Good Neighbour Network Service (Tin Shui Wai)
顏芷君女士	Ms NGAN Chi Kwan	Service Officer, Good Neighbour Network Service (Sau Mau Ping)

社會服務 II Social Service II

陳潔雯女士	Ms CHAN Kit Man	Service Manager, Social Service II
岑嘉華女士	Ms SUM Ka Wah	Psychological Counselor

病理化驗服務 Pathology Laboratory Service

鄭淑香女士	Ms CHENG Shuk Heung	Laboratory Manager
-------	---------------------	--------------------

社區復康服務 Community Rehabilitation Service

鄭家豪先生	Mr CHENG Ka Ho	Service Coordinator, Community Rehabilitation Service
-------	----------------	---

中醫服務 Chinese Medicine Service

鄧立志先生	Mr TANG Lap Che	Service Manager, Chinese Medicine
-------	-----------------	-----------------------------------